

# Modoc Road Multi-Use Path- Phase II

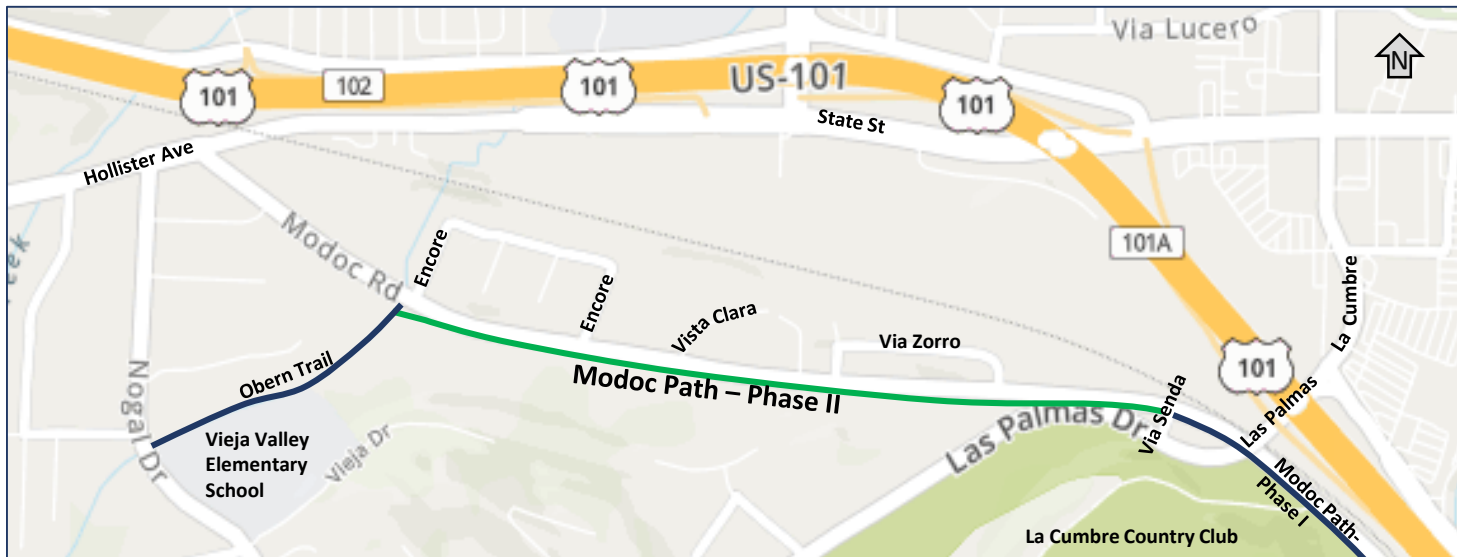


## BACKGROUND

**STATUS:** The County of Santa Barbara is in the preliminary design stages for a new path from the Via Senda to the Obern Trail along Modoc Road.

**NEED:** The path will provide a safe travel path for all user groups along this corridor and connects to a regional network of paths spanning from UCSB and the City of Goleta to the City of Santa Barbara.

**PROJECT GOAL:** create the best user experience that safely accommodates all modes of travel while minimizing impacts to the surrounding area.

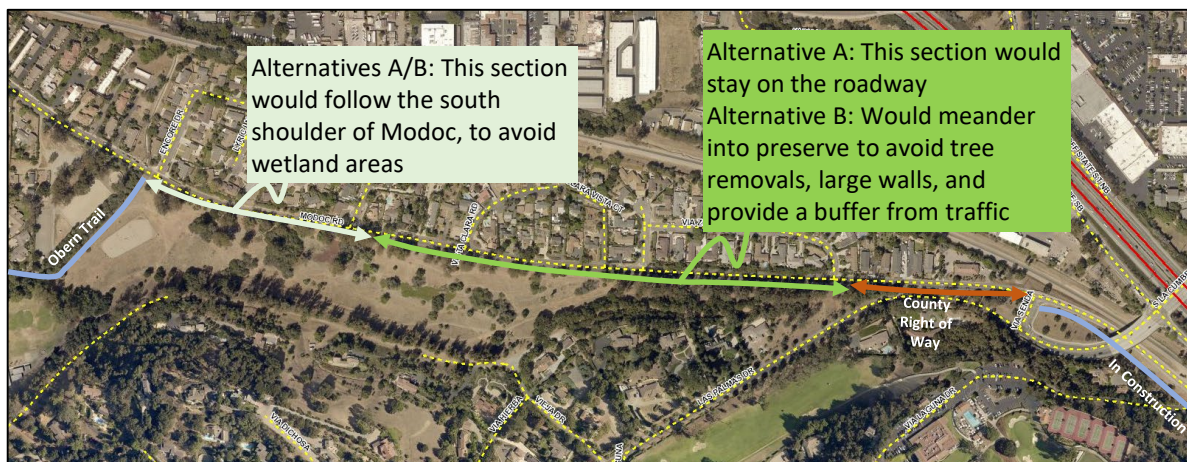


## ALIGNMENT OPTIONS

The County analyzed three potential path alignments:

- A. Along Modoc Road on the south side, directly adjacent to the road
- B. Along Modoc Road on the south side, with separation from the road (Preferred)**
- C. Along the Vieja Drive public right of way through the Hope Ranch area

Based on the project goals, Alignment B was selected as the preferred alignment and Alignment C was dismissed.



**MORE INFORMATION: [PWSB.net](http://PWSB.net)**

# Modoc Road Multi-Use Path - Phase II



## Pros

## Cons

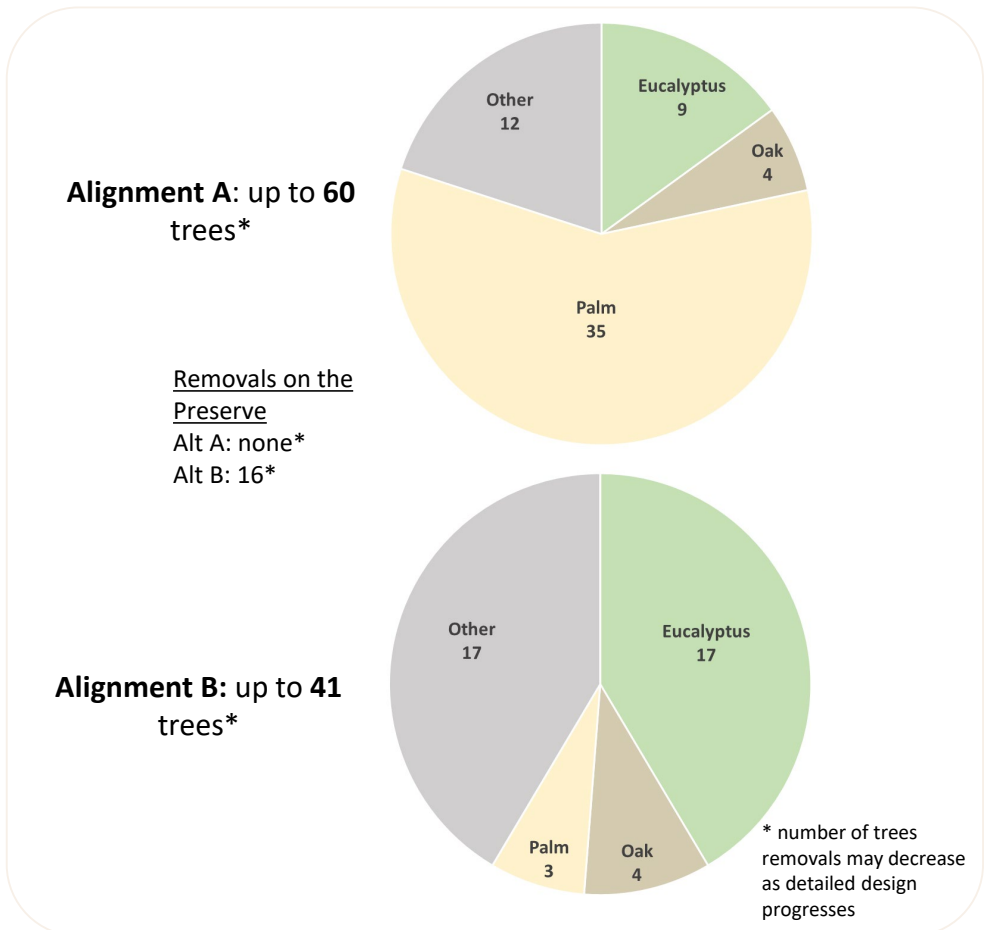
	Pros	Cons
<b>Alignment A</b>	<ul style="list-style-type: none"> <li>Requires no easement</li> <li>Avoids the Modoc Preserve</li> <li>Does not alter existing trails in the Preserve</li> <li>Replaces non-native species with native plantings</li> </ul>	<ul style="list-style-type: none"> <li>Removes more trees</li> <li>Visual impacts</li> <li>Replanting will occur off-site</li> <li>More utility relocations</li> </ul>
<b>Alignment B</b>	<ul style="list-style-type: none"> <li>Requires less tree removal and avoids most of the Canary Palms on Modoc Road</li> <li>Provides greater separation from vehicles</li> <li>Replaces non-native species with native plantings</li> <li>Reduces need for retaining walls and barriers</li> <li>Does not alter existing trails in the Preserve</li> <li>Less utility relocations</li> </ul>	<ul style="list-style-type: none"> <li>Requires easement</li> <li>Requires tree removal within the Modoc Preserve</li> <li>Alteration of grades within the Modoc Preserve</li> </ul>

## TIMELINE



## TREE REMOVAL

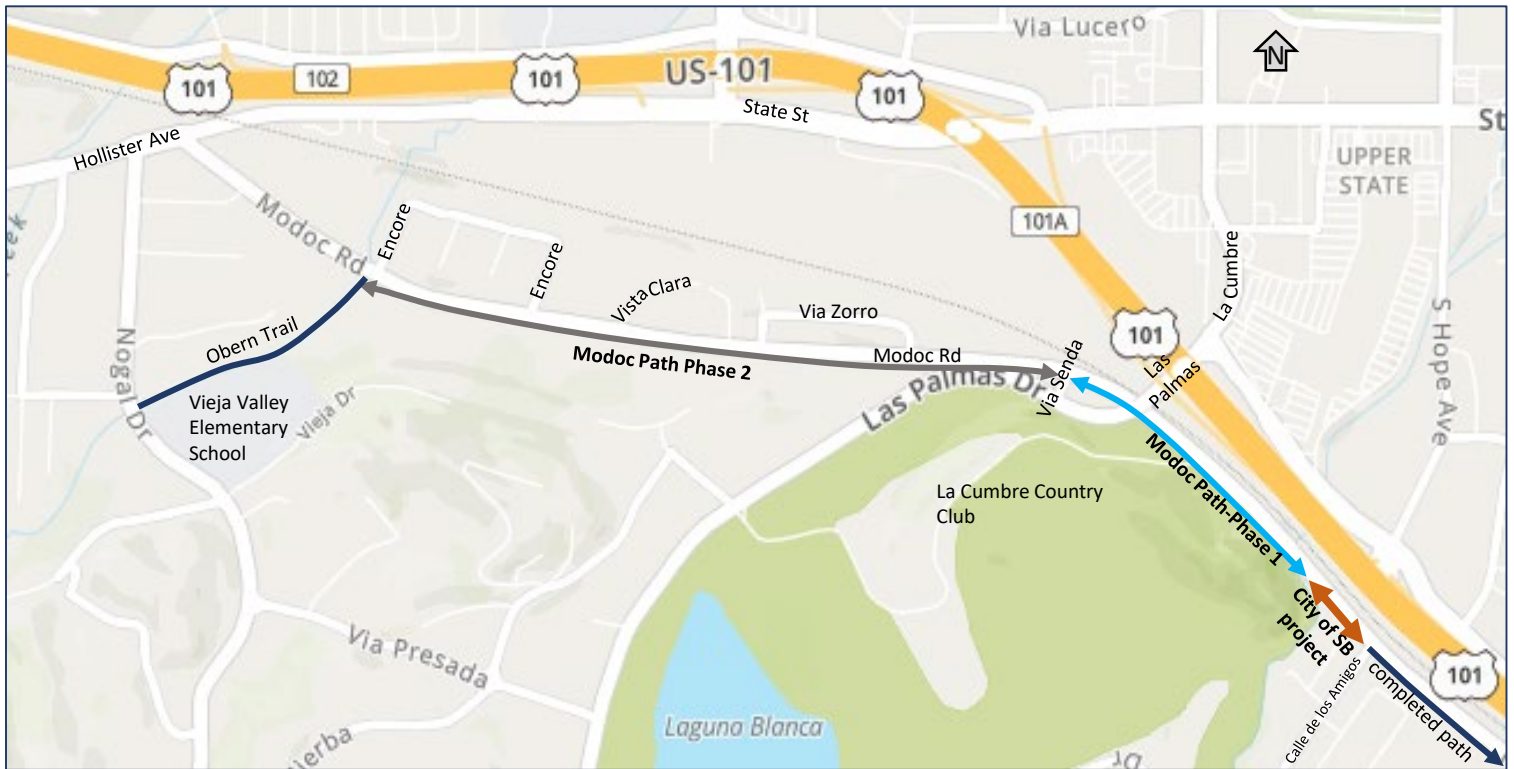
Priorities are to minimize removal of native and high value trees and to replace non-native trees and plants with native species in the preserve area.



# Modoc Multiuse Path- Phase 1



The County of Santa Barbara is pleased to announce construction will begin on Phase 1 of the Modoc Multiuse Path starting July 27<sup>th</sup>. The project is anticipated to be completed in October 2022. Project funding combines approximately \$2M of local funds leveraged with a \$5.35M Active Transportation Program grant to close a major gap in the regions multiuse trail network. Phase 1 includes construction of the segment from the City of Santa Barbara to Via Senda on the south side of Modoc Rd. Once Phases 1 and 2 are completed and the City of Santa Barbara connects a segment to their recently-completed multiuse path from Calle de Los Amigos, there will be a continuous, separated path for all user groups spanning from UCSB and the City of Goleta to the City of Santa Barbara.



# Modoc MUP and the South Coast Regional Active Transportation Network

