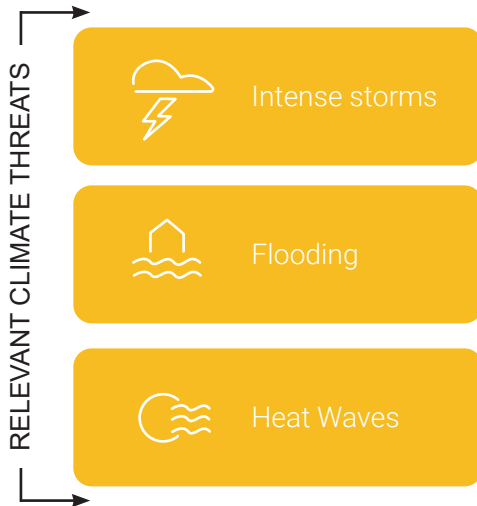


TOWN OF WATERTOWN

NEW!

EQUITY-BASED COMMUNITY GREENING PROGRAM

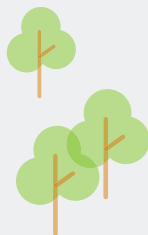


PROTECTING CLIMATE VULNERABLE NEIGHBORHOODS

As climate change worsens, Watertown will be subject to increased flooding, heat waves, and intensified urban heat island effect. But these impacts won't be evenly spread; due to factors like tree canopy and impervious surfaces, as well as socioeconomic factors, certain parts of Town are more vulnerable than others. We will target our next investments in green infrastructure in the neighborhoods where these issues will be most intense, and where residents are least equipped to handle them. This program will help create climate-resilient neighborhoods and will actively engage residents in the process.

PHASE 1 OUTCOMES

- » Map of climate-vulnerable neighborhoods in Watertown
- » Community conversations about the role of trees and green infrastructure
- » Locations identified for 15 stormwater tree trenches
- » 75% design drawings for 3 Green Streets



GET INVOLVED!



Sign up to be a paid
Community Ambassador!
Email:
resilient@watertown-ma.gov



Attend our upcoming Green
Infrastructure Tour (and stay
tuned for future events)



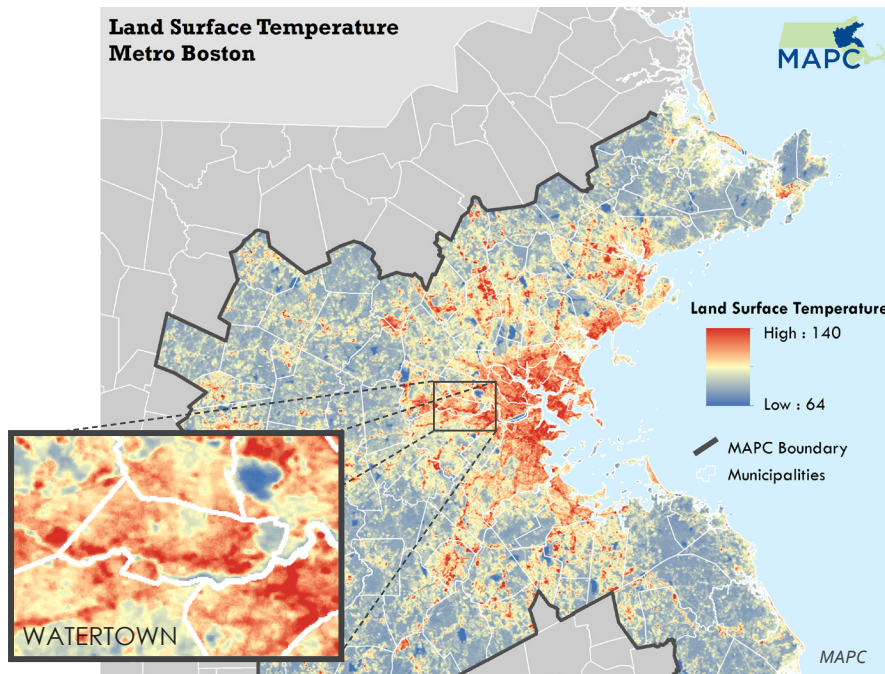
Funded by a Municipal Vulnerability
Preparedness Action Grant

For more info, visit:
www.resilient.watertown-ma.gov



GREEN INFRASTRUCTURE IN WATERTOWN

Watertown has already implemented a number of green infrastructure projects on public property and along local streets. For example, Edenfield Ave (pictured on the right) was transformed into a Green Street in 2017, with vegetated bumpouts, bioswales, and street trees. Private developers also often incorporate green infrastructure in order to comply with the Town's stormwater management standards for large properties.

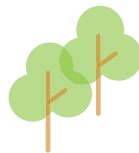


WHAT IS URBAN HEAT ISLAND EFFECT?

Urban heat islands occur when natural land cover is replaced with dense concentrations of pavement, buildings, and other surfaces that absorb and retain heat. This effect increases energy costs (e.g., for air conditioning), air pollution levels, and heat-related illness and mortality.



WHAT IS GREEN INFRASTRUCTURE?



Green infrastructure is an approach to managing stormwater that relies on water's natural tendency to be absorbed back into the ground. Through the planting of Green Streets and stormwater street tree trenches, we will tackle multiple issues at once. Our climate-vulnerable neighborhoods will be cooler, shadier, greener, and better equipped to handle storm-related flooding.

