

EMERGENCY MEDICAL SERVICES AUTHORITY

11120 INTERNATIONAL DR., 2ND FLOOR
RANCHO CORDOVA, CA 95670
(916) 322-4336 FAX (916) 324-2875



May 26, 2023

Nick Clay, EMS Administrator
Santa Barbara County EMS Agency
300 North San Antonio Rd.
Santa Barbara, CA 93110-1316

Dear Mr. Clay,

This letter is in response to Santa Barbara County Emergency Medical Services (EMS) Agency's 2017- 2022 EMS, Trauma, St-Elevation Myocardial Infarction (STEMI), Stroke and Quality Improvement (QI) plan submissions to the EMS Authority on January 31, 2023.

The EMS Authority has reviewed the EMS plan based on compliance with statutes, regulations, and case law. It has been determined that the plan meets all EMS system components identified in Health and Safety Code (HSC) § 1797.103 and is approved for implementation pursuant to HSC § 1797.105(b). Based on the transportation documentation provided, please find enclosed the ground exclusive operating area status, compiled by the EMS Authority.

The EMS Authority has also reviewed the Trauma, STEMI, Stroke, and QI plans based on compliance with Chapters 7, 7.1, 7.2, and 12 of the California Code of Regulations, Title 22, Division 9, and has been approved for implementation.

Per HSC § 1797.254, EMS Plans must be submitted to the EMS Authority annually. Your 2023 EMS plan will be due on or before May 26, 2024. Concurrently with the EMS plan, please submit an annual Trauma, STEMI, Stroke, and QI plan.

If you have any questions regarding the EMS Plan review, please contact Mr. Mark Olivas, Interim EMS Plans Coordinator, at (916) 204-7885 or mark.olivas@emsa.ca.gov.

Sincerely,

A handwritten signature in cursive script that reads "Tom McGinnis".

Tom McGinnis
Chief, EMS Systems Division

Enclosure:
AW: rd

EMERGENCY MEDICAL SERVICES AUTHORITY

11120 INTERNATIONAL DR., 2ND FLOOR
 RANCHO CORDOVA, CA 95670
 (916) 322-4336 FAX (916) 324-2875



Santa Barbara County EMS Agency 2017-2022 EMS Plan Ground Exclusive Operating Areas	Non-Exclusive	Exclusive	Method to Achieve Exclusivity	Emergency Ambulance	ALS	LALS	All Emergency Ambulance	9-1-1 Emergency Response	7-digit Emergency	ALS Ambulance	All ALS and CCT Ambulance	BLS Non- Emergency	Standby Service with Transport Authorization
ZONE	EXCLUSIVITY			TYPE			LEVEL						
Service Area 1		X	Non-Competitive	X				X					
Service Area 2	X												
Service Area 3		X	Non-Competitive	X				X					



Emergency Medical Services Agency

300 North San Antonio Road ♦ Santa Barbara, CA 93110-1316
Main Office (805) 681-5274 ♦ FAX (805) 681-5142

Mouhanad Hammami, MD *Director*
Suzanne Jacobson, CPA *Chief Financial Officer*
Paige Batson, MA, PHN, RN *Deputy Director*
Darrin Eisenbarth *Deputy Director*
Dana Gamble, LCSW *Deputy Director*
Henning Ansorg, M.D. *Health Officer*

Nick Clay *EMS Agency Director*
Daniel Shepherd, MD *EMS Agency Medical Director*

January 31, 2023

Acting Director Basnett
Emergency Medical Services Authority
10901 Gold Center Drive, Suite 400
Rancho Cordova, CA 95670

Ms. Basnett,

Please find the attached annual updated Santa Barbara County **Emergency Medical Services (EMS) Plan** for the following years: 2017, 2018, 2019, 2020, 2021, 2022; as well as the annual updates to the Santa Barbara County **Trauma Plan** for years: 2017, 2018, 2019, 2020, 2021, 2022; as well as the annual updates to the Santa Barbara County **ST-Elevation Myocardial Infarction (STEMI) Plan** for years: 2017, 2018, 2019, 2020, 2021, 2022; as well as the annual updates to the Santa Barbara County **Stroke Plan** for years: 2017, 2018, 2019, 2020, 2021, 2022; as well as updates to the annual Santa Barbara **CQI Plan** for years: 2017, 2018, 2019, 2020, 2021, 2022. These plans are submitted in accordance with *Health and Safety Code Sections 1797.103 and 1797.250 – 1797.258 and Title 22, Division 9, Chapter 7, Trauma Care Systems, Chapter 7.1, STEMI Critical Care System, Chapter 7.2, Stroke Critical Care System and Chapter 12, EMS System Quality Improvement.*

EMS PLAN ANNUAL UPDATE

No significant changes were made to the EMS Plan for years: 2017, 2018, 2019, 2020, 2021, and 2022. Key items are noted by year in each of the below sections.

System Organization and Management

No key items.

Ambulance Zone Summary

2020: *The Santa Barbara County EMS Agency (SBCEMSA) began the competitive process to select an exclusive ambulance provider as outlined in Health and Safety Code 1797.224. As of the time of this letter, the process is still ongoing.*

Assessment of Hospitals and Critical Care Centers

Since last updated in 2016, the hospital infrastructure has remained unchanged. There have been updates to the Specialty Care Centers, which are outlined in their respective summaries below.

EMS Plan: 2017, 2018, 2019, 2020, 2021, 2022

EMS System Providers, Personnel, and Training

2018: Local Optional Scope of Practice (paramedic) approved for: AIR-Q, Amiodarone, Push-dose Epinephrine, Tranexamic Acid (TXA).

2019: Local Optional Scope of Practice (paramedic) approved for: Fentanyl, Ketamine, Olanzapine, Unified Scope of Practice (Flight Paramedic),

2020: Local Optional Scope of Practice approved for: Administration of vaccines for influenza and SARS-CoV-2 (EMT and paramedic), provision of paramedical care at location other than the scene of an emergency.

2020: University of California Santa Barbara was approved by SBCEMSA to offer initial and refresher EMT training.

2020: Santa Barbara County Sheriff's Office, Search & Rescue was approved by SBCEMSA as Continuing Education Provider.

2021: Previous LOSOPs were extended.

Public Information, Education and Awareness

No key items.

Communications

The Santa Barbara County EMS system utilizes as a single point of dispatch for ambulance resources, the Santa Barbara County Public Safety Dispatch Center, operated by the Santa Barbara County Sheriff's Office. This center provides EMD services for 9-1-1 calls where they are the primary public service answering point (PSAP). Santa Barbara City Police Department provides EMD services for 9-1-1 calls where they are the primary PSAP. EMD is not performed at any other PSAP in the county. The Santa Barbara County Public Safety Dispatch Center and the Santa Barbara City Police Department are public safety agencies and provide EMD services through utilization of the Medical Priority Dispatch System, approved by Santa Barbara County EMS Agency, in compliance with Health and Safety Codes 1797.223 and 1798.8 and California Code of Regulations (CCR) 100170.

Additionally, the Santa Barbara County Public Safety Dispatch Center dispatches county-based EMS aircraft, who utilize countywide frequencies and standard hospital communication capabilities, in compliance with local EMS policies and procedures and CCR 100306.

2022: The Santa Barbara County Fire Department applied to be designated as an Emergency Medical Dispatch (EMD) center as outlined in Health and Safety Code 1797.223. At the time of the letter, SBCEMSA is evaluating their designation request to become an EMD center.

Disaster Medical Response

In 2017 and 2018 Santa Barbara County experienced two major natural disasters that had significant impacts on the County's healthcare infrastructure. SBCEMSA, along with its partners worked to address and minimize the impacts the impacts of these disasters, ensuring the stability of the county's healthcare system.

In 2020, SBCEMSA played a significant role in supporting the County's Public Health Department in the response to the SARS-CoV-2 pandemic. Additionally, SBCEMSA's Director, serving as the County's Medical Health Operational Area Coordinator (MHOAC), managed the allocation and distribution of critical medical supplies to county healthcare providers.

EMS Plan: 2017, 2018, 2019, 2020, 2021, 2022

TRAUMA PLAN ANNUAL UPDATE

Key items and changes are noted by year.

2017: Santa Barbara Cottage Hospital was designated as a Level I Adult Trauma Center by SBCEMSA. Previously designated as a Level II Adult Trauma Center.

2020: Routine Trauma System meetings were paused as a result of the impact of SARS-CoV-2 on the healthcare system.

2022: Marian Regional Medical Center was verified as a Level II Adult Trauma Center by the American College of Surgeons. Previously verified as a Level III Adult Trauma Center. At the time of the letter, SBCEMSA is evaluating their designation request to become a Level II Adult Trauma Center.

2022: Spinal Motion Restriction Policy was developed aligning the County EMS System's use of long backboards with current research and best practice.

STEMI PLAN ANNUAL UPDATE

Key items and changes are noted by year.

2017: SBCEMSA and EMS providers received the American Heart Association's Mission: Lifeline Gold Award

2018: SBCEMSA and EMS providers received the American Heart Association's Mission: Lifeline Gold Award

2019: SBCEMSA and EMS providers received the American Heart Association's Mission: Lifeline Gold Plus Award

2020: SBCEMSA and EMS providers received the American Heart Association's Mission: Lifeline Gold Plus Award

2020: Routine STEMI System meetings were paused as a result of the impact of SARS-CoV-2 on the healthcare system.

2021: SBCEMSA and EMS providers received the American Heart Association's Mission: Lifeline Gold Award

2022: SBCEMSA and EMS providers received the American Heart Association's Mission: Lifeline Gold Plus Award

STROKE PLAN ANNUAL UPDATE

Key items and changes are noted by year.

2017

Santa Barbara Cottage Hospital was designated as a Primary Stroke Center by SBCEMSA. Previously designated as an Acute Stroke Ready Hospital.

2019: Santa Barbara Cottage Hospital was designated as a Comprehensive Stroke Center by SBCEMSA. Previously designated as a Primary Stroke Center.

2020: Routine Stroke System meetings were paused as a result of the impact of SARS-CoV-2 on the healthcare system.

2022: Designated Acute Stroke Centers shifted from the use of Tissue Plasminogen Activator tPA to Tenecteplase which decreased the time from "Door to Needle" time

2022: SBCEMSA and Stroke System participants developed and deployed a Large Vessel Occlusion (LVO) recognition program, which included updated treatment and destination guidelines.

CQI PLAN ANNUAL UPDATE

Key items and changes are noted by year.

2020: Routine CQI System meetings were paused as a result of the impact of SARS-CoV-2 on the healthcare system.

EMS Plan: 2017, 2018, 2019, 2020, 2021, 2022

2020: SBCEMSA began the implementation of a clinical evaluation tool FirstPass® as well as the development of the Patient Centric View module, which combines different provider patient care reports (PCRs) into one record and evaluates the overall care of the patient against pre-defined system metrics. As of the time of this letter, the project is still ongoing.

Please feel free to contact us at (805) 681-5274 should you require any additional information or should you have any questions.

Respectfully,



Nick Clay
Director
Santa Barbara County EMS Agency



Daniel Shepherd, MD
Medical Director
Santa Barbara County EMS Agency



EMS Plan: 2017, 2018, 2019, 2020, 2021, 2022

SYSTEM ORGANIZATION AND MANAGEMENT

EMS System: Santa Barbara County EMS Agency

Reporting Year: 2017, 2018, 2019, 2020, 2021, 2022

1. Percentage of population served by each level of care by county:

(Identify for the maximum level of service offered; the total of a, b, and c should equal 100%.)

- a) Basic Life Support (BLS) 0%
- b) Limited Advanced Life Support (LALS) 0%
- c) Advanced Life Support (ALS) 100%

2. Type of agency

- a) Public Health Department Yes
- b) County Health Services Agency
- c) Other (non-health) County Department
- d) Joint Powers Agency
- e) Private Non-Profit Entity
- f) Other:

3. The person responsible for day-to-day activities of the EMS agency reports to

- a) Public Health Officer
- b) Health Services Agency Director/Administrator
- c) Board of Directors
- d) Other: Public Health Deputy Director/Community Health D

4. Indicate the non-required functions which are performed by the agency:

- Implementation of exclusive operating areas (ambulance franchising) Yes
- Designation of Trauma centers/trauma care system planning Yes
- Designation of STEMI centers/STEMI care system planning Yes
- Designation of Stroke centers/Stroke care system planning Yes
- Designation/approval of pediatric facilities No
- Development of transfer agreements Yes
- Enforcement of ambulance service contracts Yes
- Operation of ambulance service Yes
- Continuing education Yes
- Personnel training Yes
- Operation of oversight of EMS dispatch center (EMD Only) Yes
- Non-medical disaster planning Yes
- Administration of critical incident stress debriefing team (CISD) No
- Administration of disaster medical assistance team (DMAT) Yes



EMS Plan: 2017, 2018, 2019, 2020, 2021, 2022

5. Expenses (<i>Reporting Year: July 2021 – June 2022</i>)	
Personnel Costs (excludes contract personnel)	\$879,232
Services & Supplies	\$497,268
Total Expenses	\$1,363,105
6. Sources of Revenue	
Adult Vehicle Code Fines	\$0
Health/Safety Violations	\$77,138
Administrative Services and/Collection Fee	\$535,668
Ambulance Services	\$124,131
EMS Certification Fees	\$32,293
Other Services (Hospital Contracts)	\$542,374
County General Fund	\$77,699
Total Revenue	\$1,389,906

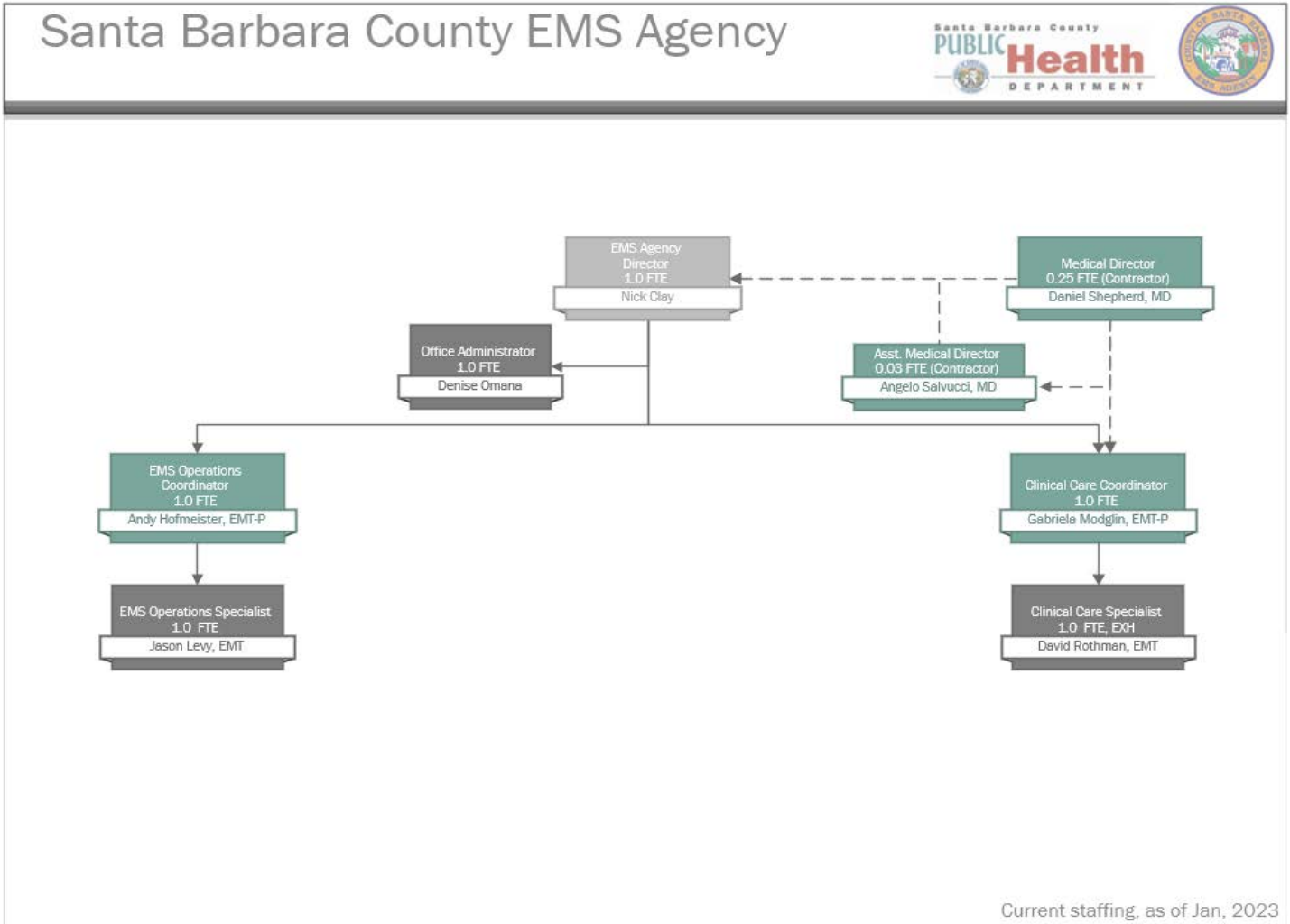
**Due to position vacancies the year's expenses were less than the revenue.*

7. Fee structure	
EMT-I certification (excludes State fee)	\$116
EMT-I recertification	\$59
EMT-P accreditation	\$245
Mobile Intensive Care Nurse/Authorized Registered Nurse certification	\$0
EMT-I training program approval	\$0
EMT-P training program approval	\$0
Base hospital application	\$0
Base hospital designation	\$0
Trauma center application	\$0
Trauma center designation (annual)	
Level I	\$188,865
Level III	\$64,986
STEMI center application	\$0
STEMI center designation (annual)	\$32,463
Stroke center application	\$0
Stroke center designation	\$0

Paramedic Accreditations						
	2017	2018	2019	2020	2021	2022
<i>Total Accredited</i>	20	13	17	16	22	30
<i>Total re-verified</i>	51	78	16	20	26	75

EMS Plan: 2017, 2018, 2019, 2020, 2021, 2022

EMS AGENCY STRUCTURE





EMS Plan: 2017, 2018, 2019, 2020, 2021, 2022

Job Title	Job Classification	FTE POSITIONS (EMS ONLY)	TOP SALARY BY HOURLY EQUIVALENT	BENEFITS (%of Salary)	COMMENTS
EMS Agency Director	Business Unit Leader	1	\$62.86	51	
EMS Operations Coordinator	Performance Improvement Coordinator	1	\$55.96	51	
Clinical Systems Coordinator	Performance Improvement Coordinator	1	\$61.49	51	
Medical Director	Contractor	0.25	Contract Position	N/A	
Assistant Medical Director	Contractor	0.03	Contract Position		
EMS Operations Specialist	Business Development Specialist	1	\$39.51	51	
Clinical Systems Specialist	Public Health Program Coordinator	1	\$34.89	51	Extra help position
Office Administrator	Administrative Office Professional I	1	\$25.94	51	



EMS Plan: 2017, 2018, 2019, 2020, 2021, 2022

AMBULANCE SUMMARY

The following tables describe the ambulance operating zones in Santa Barbara County for the calendar years 2017 through 2022.

Local EMS Agency or County Name	
Santa Barbara County EMS Agency	
Area or subarea (zone) Name or Title	
Zone 1	
Area or subarea (Zone) Geographic Description	
<p>Zone 1 is the largest ambulance zone in Santa Barbara County covering approximately 93% of the county population. Zone 1 is described as the exclusive area designated by the County of Santa Barbara, as that portion of Santa Barbara County, California exclusive of that portion Eastward of Highway 166, 25 miles East of the junction of Highway 101 and 166, and all of Highway 33; and exclusive of the Lompoc Valley as defined in Service Area 2. Service Area 1 is a “grandfathered” exclusive operating area (EOA) that conforms to 1797.224 of the Health and Safety Code continuing the use of the existing provider in the same manner and scope, without interruption, since January 1, 1981. Service Area 1 is an EOA that was approved by the Santa Barbara County Board of Supervisors in 1980.</p>	
Current Provider Name	
American Medical Response of Santa Barbara County, serving Service Area 1 since 1980.	
<input checked="" type="checkbox"/> Exclusive <input type="checkbox"/> Non-Exclusive	



EMS Plan: 2017, 2018, 2019, 2020, 2021, 2022

Local EMS Agency or County Name
Santa Barbara County EMS Agency
Area or subarea (zone) Name or Title
Zone 2
Area or subarea (Zone) Geographic Description
<p>Zone 2 is the area designated by the County of Santa Barbara, as that portion of the Lompoc Valley beginning with the intersection of Northern boundary of Vandenberg Air Force Base and the coast proceeding to the junction of San Antonio Road and Vandenberg Road, East of San Antonio Road to Highway 135 to Harris Grade Road, South on Drum Canyon Road to Highway 246, a line due South to Highway 1, and a line West to a point on the coast two miles South of Jalama Beach Park. Zone 2 is a non-exclusive operating area. ALS transport services are furnished by provider agencies that have historically operated in those areas. There have been no changes in the configuration of these Service Areas and no change in the providers for this zone since our last plan update. The Santa Barbara County Fire Department provides back up ambulance service to this area when requested. Both agencies are under contract with the Santa Barbara County EMS Agency.</p>
Current Provider Name
<p>American Medical Response and the Santa Barbara County Fire Department are the primary ambulance services in Zone 2. Both agencies are under contract with the Santa Barbara County EMS Agency.</p>
<input type="checkbox"/> Exclusive <input checked="" type="checkbox"/> Non-Exclusive



EMS Plan: 2017, 2018, 2019, 2020, 2021, 2022

Local EMS Agency or County Name
Santa Barbara County EMS Agency
Area or subarea (zone) Name or Title
Zone 3 (Service Area 3)
Area or subarea (Zone) Geographic Description
<p>“Service Area 3” means that area 25 miles East of the intersection of Highway 101 along Highway 166 (Sierra Madre Rd) to Highway 33 and 166 south to 20 miles past Ventucopa. Service Area 3 qualifies as an exclusive operating area applicable under 1797.224. BLS transport services were furnished by the Santa Barbara County Fire Department since 1974 until 1992 when they upgraded to ALS transport services.</p>
Current Provider Name
<p>Santa Barbara County Fire Department has provided BLS ambulance service in Service Area 3 since 1974 increasing to ALS ambulance service in 1992.</p>
<input checked="" type="checkbox"/> Exclusive <input type="checkbox"/> Non-Exclusive

ASSESSMENT OF HOSPITALS AND CRITICAL CARE

Reporting Year: 2017, 2018, 2019, 2020, 2021, 2022

EMS System Facility Statistics

Emergency Departments

Total number of emergency departments: 5

Hospitals with Written Agreements

Total number of receiving hospitals: 5

Total number of base hospitals: 5

Alternative Receiving Facilities

Do you have designated alternative receiving facilities? Yes No

Number of alternate receiving facilities: 0

Psychiatric Receiving Facilities: 0

Sobering Centers: 0

Specialty Care Systems

Trauma System

Do you have a trauma system? Yes No

Adult Trauma Centers:

Level I 1 Level II 0 Level III 1 Level IV 0

Pediatric Trauma Centers:

Level I 0 Level II 1 Level III 0 Level IV 0

Number of EMS patients meeting trauma triage criteria

a) Transported to a trauma center by ambulance: 1587

b) Not transported to a trauma center by ambulance: 150

Number of trauma patients transferred to a trauma center for a higher level of care:

a) From a non-trauma facility: 14

b) From a lower level trauma center: 1

STEMI System

Do you have a ST-Elevation Myocardial Infarction (STEMI) system? Yes No

Number of STEMI centers/hospitals designated by EMS Agency: 5

a) STEMI Receiving: 2

b) STEMI Referring: 3

Stroke System

Do you have a stroke system? Yes No

Number of stroke centers/hospitals (third party accreditation only): 4

a) Comprehensive Stroke Center (CSC): 1

b) Primary Stroke Center (PSC): 1

c) Acute Stroke Ready Hospital (ASRH): 2



EMS Plan: 2017, 2018, 2019, 2020, 2021, 2022

EMS for Children

Do you have an EMS for children system? Yes No

Number of pediatric receiving centers: 1

a) Comprehensive: 1

EMS Plan: 2017, 2018, 2019, 2020, 2021, 2022

EMS SYSTEM PROVIDERS, PERSONNEL, AND TRAINING

Local EMS Agency or County Name					
Santa Barbara County EMS Agency					
Provider Name:			Provider Number		
American Medical Response West			S42-50088		
Ownership			Level of Service		
<input checked="" type="checkbox"/> Private <input type="checkbox"/> Public			<input checked="" type="checkbox"/> BLS <input type="checkbox"/> BLS-OS <input checked="" type="checkbox"/> ALS <input checked="" type="checkbox"/> CCT		<input type="checkbox"/> First Response <input checked="" type="checkbox"/> Ground Transport <input type="checkbox"/> Rescue Air Transport <input type="checkbox"/> Air Ambulance Transport
Provider Address			Phone Number		
240 E. Highway 246, Ste. 300 Buellton, California 93427			(805) 688-6550		
Point of Contact					
Dave Schierman					
CY	Incident Count		Medical Director Retained	Contract with the LEMSA	Number of Stations
	All Incidents	Transports			
2017	42,695	31,357	Yes	Yes	7
2018	41,586	30,297	Yes	Yes	7
2019	41,431	29,612	Yes	Yes	7
2020	39,869	27,892	Yes	Yes	7
2021	43,902	30,824	Yes	Yes	7
2022	45,558	32,896	Yes	Yes	7
Training Program		Training Provider Number	Program Level		
<input checked="" type="checkbox"/> Continuing Education <input type="checkbox"/> Initial Training <input type="checkbox"/> Renewal Training		42-0750	<input type="checkbox"/> First Aid <input checked="" type="checkbox"/> EMT <input type="checkbox"/> EMT- OS <input checked="" type="checkbox"/> EMT – P		
Student Eligibility			Expiration Date		
<input checked="" type="checkbox"/> Employment only <input type="checkbox"/> Public			January 31, 2027		



EMS Plan: 2017, 2018, 2019, 2020, 2021, 2022

Local EMS Agency or County Name						
Santa Barbara County EMS Agency						
Provider Name			Provider Number			
Santa Barbara County Fire Department			S42-50841			
Ownership			Level of Service			
<input type="checkbox"/> Private <input checked="" type="checkbox"/> Public			<input checked="" type="checkbox"/> BLS <input type="checkbox"/> BLS-OS <input checked="" type="checkbox"/> ALS <input type="checkbox"/> CCT		<input checked="" type="checkbox"/> First Response <input checked="" type="checkbox"/> Ground Transport <input checked="" type="checkbox"/> Rescue Air Transport <input type="checkbox"/> Air Ambulance Transport	
Provider Address			Phone Number			
4410 Cathedral Oaks Rd, Santa Barbara, CA 93110			(805) 681-5500			
Point of Contact						
Garrett Huff						
CY	Incident Count			Medical Director Retained	Contract with the LEMSA	Number of stations
	All Incidents	Ground Transports	Air Transports			
2017	12,341	973	12	Yes	Yes	16
2018	11,989	984	11	Yes	Yes	16
2019	11,822	997	9	Yes	Yes	16
2020	10,621	812	18	Yes	Yes	16
2021	12,042	1,003	22	Yes	Yes	16
2022	12,919	1,026	30	Yes	Yes	16
Training Program		Training Provider Number		Program Level		
<input checked="" type="checkbox"/> Continuing Education <input type="checkbox"/> Initial Training <input type="checkbox"/> Renewal Training		42-0300		<input type="checkbox"/> First Aid <input checked="" type="checkbox"/> EMT <input type="checkbox"/> EMT- OS <input checked="" type="checkbox"/> EMT – P		
Student Eligibility				Expiration Date		
<input checked="" type="checkbox"/> Employment only <input type="checkbox"/> Public				February 2, 2024		



EMS Plan: 2017, 2018, 2019, 2020, 2021, 2022

Local EMS Agency or County Name				
Santa Barbara County EMS Agency				
Provider Name		Provider Number		
Santa Barbara City Fire Department		S42-50840		
Ownership		Level of Service		
<input type="checkbox"/> Private <input checked="" type="checkbox"/> Public		<input checked="" type="checkbox"/> BLS <input type="checkbox"/> BLS-OS <input type="checkbox"/> ALS <input type="checkbox"/> CCT	<input checked="" type="checkbox"/> First Response <input type="checkbox"/> Ground Transport <input type="checkbox"/> Rescue Air Transport <input type="checkbox"/> Air Ambulance Transport	
Provider Address		Phone Number		
121 W. Carrillo St. Santa Barbara, CA 93101		(805) 963-1015		
Point of Contact				
Michael Hoose				
CY	Incident Count	Medical Director Retained	Contract with the LEMSA	Number of stations
2017	8,108	Yes	Yes	8
2018	7,953	Yes	Yes	8
2019	8,171	Yes	Yes	8
2020	8,068	Yes	Yes	8
2021	9,548	Yes	Yes	8
2022	9,479	Yes	Yes	8
Training Program	Training Provider Number	Program Level		
<input checked="" type="checkbox"/> Continuing Education <input type="checkbox"/> Initial Training <input type="checkbox"/> Renewal Training	42-0960	<input type="checkbox"/> First Aid <input checked="" type="checkbox"/> EMT <input type="checkbox"/> EMT- OS <input type="checkbox"/> EMT – P		
Student Eligibility		Expiration Date		
<input checked="" type="checkbox"/> Employment only <input type="checkbox"/> Public		February 2, 2024		



EMS Plan: 2017, 2018, 2019, 2020, 2021, 2022

Local EMS Agency or County Name				
Santa Barbara County EMS Agency				
Provider Name		Provider Number		
Santa Maria City Fire Department		S42-50840		
Ownership		Level of Service		
<input type="checkbox"/> Private <input checked="" type="checkbox"/> Public		<input checked="" type="checkbox"/> BLS <input type="checkbox"/> BLS-OS <input type="checkbox"/> ALS <input type="checkbox"/> CCT	<input checked="" type="checkbox"/> First Response <input type="checkbox"/> Ground Transport <input type="checkbox"/> Rescue Air Transport <input type="checkbox"/> Air Ambulance Transport	
Provider Address		Phone Number		
314 West Cook Street Santa Maria, California 93458		(805) 925-0951		
Point of Contact				
Jim Clayton				
CY	Incident Count	Medical Director Retained	Contract with the LEMSA	Number of stations
2017	6,324	Yes	Yes	6
2018	6,422	Yes	Yes	6
2019	7,907	Yes	Yes	6
2020	7,797	Yes	Yes	6
2021	8,092	Yes	Yes	6
2022	8,896	Yes	Yes	6



EMS Plan: 2017, 2018, 2019, 2020, 2021, 2022

Local EMS Agency or County Name				
Santa Barbara County EMS Agency				
Provider Name		Provider Number		
Guadalupe Fire Department Department of Public Safety		S42-51325		
Ownership		Level of Service		
<input type="checkbox"/> Private <input checked="" type="checkbox"/> Public		<input type="checkbox"/> BLS <input checked="" type="checkbox"/> BLS-OS <input type="checkbox"/> ALS <input type="checkbox"/> CCT	<input checked="" type="checkbox"/> First Response <input type="checkbox"/> Ground Transport <input type="checkbox"/> Rescue Air Transport <input type="checkbox"/> Air Ambulance Transport	
Provider Address		Phone Number		
918 Obispo Street Guadalupe, California 93434		(805) 343-1340		
Point of Contact				
Fernando Garcia				
CY	Incident Count	Medical Director Retained	Contract with the LEMSA	Number of stations
2017	397	Yes	Yes	1
2018	415	Yes	Yes	1
2019	445	Yes	Yes	1
2020	456	Yes	Yes	1
2021	398	Yes	Yes	1
2022	463	Yes	Yes	1
Training Program	Training Provider Number	Program Level		
<input checked="" type="checkbox"/> Continuing Education <input type="checkbox"/> Initial Training <input type="checkbox"/> Renewal Training	42-0970	<input type="checkbox"/> First Aid <input checked="" type="checkbox"/> EMT <input checked="" type="checkbox"/> EMT- OS <input type="checkbox"/> EMT – P		
Student Eligibility		Expiration Date		
<input checked="" type="checkbox"/> Employment only <input type="checkbox"/> Public		January 31, 2027		



EMS Plan: 2017, 2018, 2019, 2020, 2021, 2022

Local EMS Agency or County Name				
Santa Barbara County EMS Agency				
Provider Name		Provider Number		
Lompoc City Fire Department		S42-51326		
Ownership		Level of Service		
<input type="checkbox"/> Private <input checked="" type="checkbox"/> Public		<input type="checkbox"/> BLS <input checked="" type="checkbox"/> BLS-OS <input type="checkbox"/> ALS <input type="checkbox"/> CCT	<input checked="" type="checkbox"/> First Response <input type="checkbox"/> Ground Transport <input type="checkbox"/> Rescue Air Transport <input type="checkbox"/> Air Ambulance Transport	
Provider Address		Phone Number		
115 South G Street Lompoc, California, 93436		(805) 736-4513		
Point of Contact				
Kevin Shay				
CY	Incident Count	Medical Director Retained	Contract with the LEMSA	Number of stations
2017	3,191	Yes	Yes	2
2018	3,055	Yes	Yes	2
2019	2,888	Yes	Yes	2
2020	2,937	Yes	Yes	2
2021	3,523	Yes	Yes	2
2022	3,863	Yes	Yes	2
Training Program	Training Provider Number	Program Level		
<input checked="" type="checkbox"/> Continuing Education <input checked="" type="checkbox"/> Initial Training <input checked="" type="checkbox"/> Renewal Training	42-0850	<input type="checkbox"/> First Aid <input checked="" type="checkbox"/> EMT (CE) <input checked="" type="checkbox"/> EMT- OS (Training) <input type="checkbox"/> EMT – P		
Student Eligibility		Expiration Date		
<input checked="" type="checkbox"/> Employment only <input type="checkbox"/> Public		January 31, 2027		



EMS Plan: 2017, 2018, 2019, 2020, 2021, 2022

Local EMS Agency or County Name					
Santa Barbara County EMS Agency					
Provider Name			Provider Number		
CALSTAR			S42-50193		
Ownership			Level of Service		
<input checked="" type="checkbox"/> Private <input type="checkbox"/> Public			<input type="checkbox"/> BLS <input type="checkbox"/> BLS-OS <input type="checkbox"/> ALS <input checked="" type="checkbox"/> CCT		<input type="checkbox"/> First Response <input type="checkbox"/> Ground Transport <input type="checkbox"/> Rescue Air Transport <input checked="" type="checkbox"/> Air Ambulance Transport
Provider Address			Phone Number		
3996 Mitchell Road Santa Maria, CA 93455			(805) 938-9001		
Point of Contact					
Aaron Hartney					
CY	Incident Count		Medical Director Retained	Contract with the LEMSA	Number of Stations
	All Incidents	Transports			
2017	131	130	Yes	Yes	1
2018	267	265	Yes	Yes	1
2019	206	205	Yes	Yes	1
2020	168	168	Yes	Yes	1
2021	154	152	Yes	Yes	1
2022	247	219	Yes	Yes	1



EMS Plan: 2017, 2018, 2019, 2020, 2021, 2022

Local EMS Agency or County Name				
Santa Barbara County EMS Agency				
Provider Name		Provider Number		
Montecito Fire Protection District		S42-50639		
Ownership		Level of Service		
<input type="checkbox"/> Private <input checked="" type="checkbox"/> Public		<input type="checkbox"/> BLS <input type="checkbox"/> BLS-OS <input checked="" type="checkbox"/> ALS <input type="checkbox"/> CCT	<input checked="" type="checkbox"/> First Response <input type="checkbox"/> Ground Transport <input type="checkbox"/> Rescue Air Transport <input type="checkbox"/> Air Ambulance Transport	
Provider Address		Phone Number		
595 San Ysidro Road, Montecito, California 93108		(805) 969-7762		
Point of Contact				
Anthony Hudley				
CY	Incident Count	Medical Director Retained	Contract with the LEMSA	Number of Stations
2017	906	Yes	Yes	2
2018	756	Yes	Yes	2
2019	846	Yes	Yes	2
2020	732	Yes	Yes	2
2021	933	Yes	Yes	2
2022	948	Yes	Yes	2
Training Program	Training Provider Number	Program Level		
<input checked="" type="checkbox"/> Continuing Education <input type="checkbox"/> Initial Training <input type="checkbox"/> Renewal Training	42-0900	<input type="checkbox"/> First Aid <input checked="" type="checkbox"/> EMT <input type="checkbox"/> EMT- OS <input checked="" type="checkbox"/> EMT – P		
Student Eligibility		Expiration Date		
<input checked="" type="checkbox"/> Employment only <input type="checkbox"/> Public		February 2, 2024		



EMS Plan: 2017, 2018, 2019, 2020, 2021, 2022

Local EMS Agency or County Name				
Santa Barbara County EMS Agency				
Provider Name		Provider Number		
Carpinteria-Summerland Fire Protection District		S42-51268		
Ownership		Level of Service		
<input type="checkbox"/> Private <input checked="" type="checkbox"/> Public		<input type="checkbox"/> BLS <input type="checkbox"/> BLS-OS <input checked="" type="checkbox"/> ALS <input type="checkbox"/> CCT <input checked="" type="checkbox"/> First Response <input type="checkbox"/> Ground Transport <input type="checkbox"/> Rescue Air Transport <input type="checkbox"/> Air Ambulance Transport		
Provider Address		Phone Number		
1140 Eugenia Place, Ste. A Carpinteria, CA 93013		(805) 684-4591		
Point of Contact				
Michael Hayek				
CY	Incident Count	Medical Director Retained	Contract with the LEMSA	Number of stations
2017	1,613	Yes	Yes	2
2018	1,594	Yes	Yes	2
2019	1,625	Yes	Yes	2
2020	1,557	Yes	Yes	2
2021	1,759	Yes	Yes	2
2022	1,823	Yes	Yes	2
Training Program	Training Program Number	Program Level		
<input checked="" type="checkbox"/> Continuing Education <input type="checkbox"/> Initial Training <input type="checkbox"/> Renewal Training	42-9200	<input type="checkbox"/> First Aid <input checked="" type="checkbox"/> EMT <input type="checkbox"/> EMT- OS <input checked="" type="checkbox"/> EMT – P		
Student Eligibility		Expiration Date		
<input checked="" type="checkbox"/> Employment only <input type="checkbox"/> Public		January 31, 2027		



EMS Plan: 2017, 2018, 2019, 2020, 2021, 2022

Local EMS Agency or County Name		
Santa Barbara County EMS Agency		
Provider Name	Provider Number	
Santa Barbara County Sheriff Search and Rescue	42-0430	
Ownership	Level of Service	
<input type="checkbox"/> Private <input checked="" type="checkbox"/> Public	<input type="checkbox"/> BLS <input type="checkbox"/> BLS-OS <input checked="" type="checkbox"/> ALS <input type="checkbox"/> CCT	<input checked="" type="checkbox"/> First Response <input type="checkbox"/> Ground Transport <input type="checkbox"/> Rescue Air Transport <input type="checkbox"/> Air Ambulance Transport
Provider Address	Phone Number	
66 South San Antonio Rd Santa Barbara, CA 93110	(805) 684-4591	
Point of Contact		
Susie Theilmann, RN		
Training Program	Program Level	
<input checked="" type="checkbox"/> Continuing Education <input type="checkbox"/> Initial Training <input type="checkbox"/> Renewal Training	<input type="checkbox"/> First Aid <input checked="" type="checkbox"/> EMT <input type="checkbox"/> EMT- OS <input type="checkbox"/> EMT – P	
Student Eligibility	Expiration Date	
<input checked="" type="checkbox"/> Employment only <input type="checkbox"/> Public	January 31, 2027	



EMS Plan: 2017, 2018, 2019, 2020, 2021, 2022

Local EMS Agency or County Name	
Santa Barbara County EMS Agency	
Provider Name:	Provider Number
Santa Barbara City College	42-0400
Ownership	
<input type="checkbox"/> Private <input checked="" type="checkbox"/> Public	
Provider Address	Phone Number
721 Cliff Drive Santa Barbara, CA 93109	
Point of Contact	
Mary Gauthier	
Training Program	Program Level
<input checked="" type="checkbox"/> Continuing Education <input checked="" type="checkbox"/> Initial Training <input checked="" type="checkbox"/> Renewal Training	<input checked="" type="checkbox"/> First Aid <input checked="" type="checkbox"/> EMT <input type="checkbox"/> EMT- OS <input type="checkbox"/> EMT – P
Student Eligibility	Expiration Date
<input type="checkbox"/> Employment only <input checked="" type="checkbox"/> Public	January 31, 2027



EMS Plan: 2017, 2018, 2019, 2020, 2021, 2022

Local EMS Agency or County Name	
Santa Barbara County EMS Agency	
Provider Name:	Provider Number
University of California, Santa Barbara School of Extended Learning	
Ownership	
<input type="checkbox"/> Private <input checked="" type="checkbox"/> Public	
Provider Address	Phone Number
UC Santa Barbara School of Extended Learning Santa Barbara, California 93106	(805) 893-8000
Point of Contact	
Matthew McElhenie	
Training Program	Program Level
<input type="checkbox"/> Continuing Education <input checked="" type="checkbox"/> Initial Training <input checked="" type="checkbox"/> Renewal Training	<input checked="" type="checkbox"/> First Aid <input checked="" type="checkbox"/> EMT <input type="checkbox"/> EMT- OS <input type="checkbox"/> EMT – P
Student Eligibility	Expiration Date
<input type="checkbox"/> Employment only <input checked="" type="checkbox"/> Public	September 23, 2023



EMS Plan: 2017, 2018, 2019, 2020, 2021, 2022

Local EMS Agency or County Name	
Santa Barbara County EMS Agency	
Provider Name:	Provider Number
Allan Hancock Community College	42-0100
Ownership	
<input type="checkbox"/> Private <input checked="" type="checkbox"/> Public	
Provider Address	Phone Number
Allan Hancock College 800 S. College Dr. Santa Maria, CA 93454	(805) 922-6966
Point of Contact	
Sue Roehl	
Training Program	Program Level
<input checked="" type="checkbox"/> Continuing Education <input checked="" type="checkbox"/> Initial Training <input checked="" type="checkbox"/> Renewal Training	<input type="checkbox"/> First Aid <input checked="" type="checkbox"/> EMT <input type="checkbox"/> EMT- OS <input type="checkbox"/> EMT – P
Student Eligibility	Expiration Date
<input type="checkbox"/> Employment only <input checked="" type="checkbox"/> Public	January 31, 2027



EMS Plan: 2017, 2018, 2019, 2020, 2021, 2022

Local EMS Agency or County Name	
Santa Barbara County EMS Agency	
Provider Name	Provider Number
Cottage Health Systems	42-7000
Ownership	Level of Service
<input checked="" type="checkbox"/> Private <input type="checkbox"/> Public	
Provider Address	Phone Number
400 W Pueblo St, Santa Barbara, CA 93105	(805) 258-1287
Point of Contact	
Kelly Kam	
Training Program	Program Level
<input checked="" type="checkbox"/> Continuing Education <input type="checkbox"/> Initial Training <input type="checkbox"/> Renewal Training	<input type="checkbox"/> First Aid <input checked="" type="checkbox"/> EMT <input type="checkbox"/> EMT- OS <input checked="" type="checkbox"/> EMT – P
Student Eligibility	Expiration Date
<input type="checkbox"/> Employment only <input checked="" type="checkbox"/> Public	January 31, 2027



EMS Plan: 2017, 2018, 2019, 2020, 2021, 2022

Local EMS Agency or County Name	
Santa Barbara County EMS Agency	
Provider Name	Provider Number
NCTI - Santa Barbara	42-0001
Ownership	
<input checked="" type="checkbox"/> Private <input type="checkbox"/> Public	
Provider Address	Phone Number
240 East HWY 246, Suite 110, Buellton CA 93427	(951) 683 - 2498
Point of Contact	
Dave Schierman	
Training Program	Program Level
<input checked="" type="checkbox"/> Continuing Education <input checked="" type="checkbox"/> Initial Training <input checked="" type="checkbox"/> Renewal Training	<input type="checkbox"/> First Aid <input checked="" type="checkbox"/> EMT <input type="checkbox"/> EMT- OS <input checked="" type="checkbox"/> EMT – P
Student Eligibility	Expiration Date
<input type="checkbox"/> Employment only <input checked="" type="checkbox"/> Public	November 30, 2024



EMS Plan: 2017, 2018, 2019, 2020, 2021, 2022

Local EMS Agency or County Name	
Santa Barbara County EMS Agency	
Provider Name	Provider Number
Santa Barbara County EMS Agency	42-0001
Ownership	
<input type="checkbox"/> Private <input checked="" type="checkbox"/> Public	
Provider Address	Phone Number
300 N. San Antonio Santa Barbara, CA 93110	(805) 258-1287
Point of Contact	
Nick Clay, Director	
Training Program	Program Level
<input checked="" type="checkbox"/> Continuing Education <input type="checkbox"/> Initial Training <input type="checkbox"/> Renewal Training	<input checked="" type="checkbox"/> First Aid <input checked="" type="checkbox"/> EMT <input checked="" type="checkbox"/> EMT- OS <input checked="" type="checkbox"/> EMT – P
Student Eligibility	Expiration Date
<input type="checkbox"/> Employment only <input checked="" type="checkbox"/> Public	December 31, 2099

EMS Plan: 2017, 2018, 2019, 2020, 2021, 2022

PUBLIC INFORMATION, EDUCATION & AWARENESS

Number of programs EMS Agency provided to the public:

Reporting Year 2017

1__ EMS Awareness	0__ Bleeding Control
1__ First Aid	1__ CPR
0__ Prevention Activities	1__ Disaster Preparedness

Reporting Year 2018

1__ EMS Awareness	0__ Bleeding Control
1__ First Aid	1__ CPR
1__ Prevention Activities	1__ Disaster Preparedness

Reporting Year 2019

1__ EMS Awareness	0__ Bleeding Control
1__ First Aid	1__ CPR
1__ Prevention Activities	1__ Disaster Preparedness

Reporting Year 2020

1__ EMS Awareness	0__ Bleeding Control
0__ First Aid	0__ CPR
0__ Prevention Activities	0__ Disaster Preparedness

Reporting Year 2021

1__ EMS Awareness	0__ Bleeding Control
1__ First Aid	0__ CPR
3__ Prevention Activities	1__ Disaster Preparedness

Reporting Year 2022

2__ EMS Awareness	0__ Bleeding Control
1__ First Aid	0__ CPR
3__ Prevention Activities	1__ Disaster Preparedness

EMS Plan: 2017, 2018, 2019, 2020, 2021, 2022

COMMUNICATIONS

Number of primary Public Answering Points (PSAP): 5

Number of secondary PSAPs: 1

Number of dispatch centers directly dispatching ambulances: 1

Number of EMS dispatch agencies utilizing EMD guidelines: 2

Number of designated dispatch centers for EMS aircraft: 1

Who is your primary dispatch agency for day-to day emergencies? Santa Barbara County Sheriff's Office

Do you have an operational area disaster communication system? Yes No

Identify other methods: Reddinet, ARES, Satellite Phone

Can all medical response units communicate on the same disaster communication system? Yes No

Do you participate in the Operational Area Satellite Information System? Yes No

Do you have a plan to utilize the Radio Amateur Civil Emergency Services as a back-up communication system? Yes No



EMS Plan: 2017, 2018, 2019, 2020, 2021, 2022

DISASTER MEDICAL RESPONSE

EMS Agency Structure

Are you part of a multicounty EMS system for disaster response?	<input type="checkbox"/> Yes <input checked="" type="checkbox"/> No
Are you a separate department or agency? a) To whom do you report? <u>Public Health Department</u>	<input checked="" type="checkbox"/> Yes <input type="checkbox"/> No
What healthcare coalitions are you participating in? Santa Barbara County Health Care Coalition a) How often do you meet with the healthcare coalition? Monthly	
Do you have connection with your Disaster Healthcare Volunteer Administrators in your jurisdiction?	<input checked="" type="checkbox"/> Yes <input type="checkbox"/> No
List all neighboring counties which you have written cooperative agreements and/or medical aid/assistance agreements with: Region I (San Luis Obispo County, Ventura County, Los Angeles County, Orange County) Region 6 (Imperial County, Inyo County, Mono County, Riverside County, San Bernardino County, San Diego County)	

EMS Agency Plans, Policies, Programs, and Teams

Do you have the following:

a) Disaster Plan?	<input checked="" type="checkbox"/> Yes <input type="checkbox"/> No	Multi Casualty Incident Response
b) Active Shooter Policy?	<input type="checkbox"/> Yes <input checked="" type="checkbox"/> No	
c) Hazardous Material (Hazmat) Plan?	<input checked="" type="checkbox"/> Yes <input type="checkbox"/> No	Hazardous Material Incident/Decontamination of Patients
d) Disaster Medical Cache?	<input checked="" type="checkbox"/> Yes <input type="checkbox"/> No	
e) Disaster Medical Support Group?	<input checked="" type="checkbox"/> Yes <input type="checkbox"/> No	Medical Reserve Corp
f) Medical Assets	<input checked="" type="checkbox"/> Yes <input type="checkbox"/> No	
g) Incident Command Organization Chart	<input checked="" type="checkbox"/> Yes <input type="checkbox"/> No	
h) Communications Plan	<input checked="" type="checkbox"/> Yes <input type="checkbox"/> No	ReddiNet Communication Policy
i) Ambulance Strike Team Leader Program	<input type="checkbox"/> Yes <input checked="" type="checkbox"/> No	
j) EMS Authority Affiliated Strike Team (includes a Disaster Medical Support Unit)	<input checked="" type="checkbox"/> Yes <input type="checkbox"/> No	n/a



EMS Plan: 2017, 2018, 2019, 2020, 2021, 2022

EMS Agency System Operations and Resources

Do you have designated field treatment sites? a) Identify the locations: N/A b) How are they staffed: N/A c) Is there a supply system for supporting them for 72 hours?		<input type="checkbox"/> Yes <input checked="" type="checkbox"/> No <input checked="" type="checkbox"/> Yes <input type="checkbox"/> No																					
Is there a mental/behavioral health program available for responders within the jurisdiction? a) Identify the program: <u>Provided by each provider agency</u>		<input checked="" type="checkbox"/> Yes <input type="checkbox"/> No																					
Is there a team medical response capability? a) For each team, are they incorporated into the local response plan? b) Are they available for statewide response? c) Are they part of a formal out-of-state response system?		<input checked="" type="checkbox"/> Yes <input type="checkbox"/> No <input checked="" type="checkbox"/> Yes <input type="checkbox"/> No <input checked="" type="checkbox"/> Yes <input type="checkbox"/> No <input type="checkbox"/> Yes <input checked="" type="checkbox"/> No																					
Are there HazMat trained medical response teams? a) At what HazMat level are they trained? <u>FRA/FRO</u> b) Is there capability to do decontamination in an emergency room? c) Is there capability to do decontamination in the field?		<input checked="" type="checkbox"/> Yes <input type="checkbox"/> No <input checked="" type="checkbox"/> Yes <input type="checkbox"/> No <input checked="" type="checkbox"/> Yes <input type="checkbox"/> No <input checked="" type="checkbox"/> Yes <input type="checkbox"/> No																					
Identify who the Medical Health Operational Area Coordinator is: <input type="checkbox"/> Health Officer <input checked="" type="checkbox"/> EMS Agency <input type="checkbox"/> Jointly Appointed																							
Do you have specific training for mass casualty incident policies?		<input checked="" type="checkbox"/> Yes <input type="checkbox"/> No																					
Are you using the Standard Emergency Management System (SEMS)? a) Does it incorporate a form of Incident Command System (ICS) structure b) Are you integrated in the Medical/Health branch of the Operation Section in each operational area Emergency Operations Center within the jurisdiction?		<input checked="" type="checkbox"/> Yes <input type="checkbox"/> No <input checked="" type="checkbox"/> Yes <input type="checkbox"/> No <input checked="" type="checkbox"/> Yes <input type="checkbox"/> No																					
Have you tested a multicausality incident plan this year?		<input checked="" type="checkbox"/> Yes <input type="checkbox"/> No <input checked="" type="checkbox"/> Yes <input type="checkbox"/> No <input checked="" type="checkbox"/> Yes <input type="checkbox"/> No <input checked="" type="checkbox"/> Yes <input type="checkbox"/> No <input checked="" type="checkbox"/> Yes <input type="checkbox"/> No <input checked="" type="checkbox"/> Yes <input type="checkbox"/> No																					
	<table border="1"> <thead> <tr> <th></th> <th>Real Event</th> <th>Exercise</th> </tr> </thead> <tbody> <tr> <td>2017</td> <td>Isla Vista Halloween; DelTopia</td> <td></td> </tr> <tr> <td>2018</td> <td>Isla Vista Halloween; DelTopia 1/9 Debris Flow – Montecito</td> <td></td> </tr> <tr> <td>2019</td> <td>Isla Vista Halloween; DelTopia</td> <td>Santa Barbara Airport Triannual Drill; Santa Maria Airport Triannual Drill</td> </tr> <tr> <td>2020</td> <td>Isla Vista Halloween; DelTopia</td> <td></td> </tr> <tr> <td>2021</td> <td>Isla Vista Halloween; DelTopia</td> <td></td> </tr> <tr> <td>2022</td> <td>Isla Vista Halloween; DelTopia</td> <td>Santa Barbara Airport Triannual Drill; Santa Maria Airport Triannual Drill</td> </tr> </tbody> </table>			Real Event	Exercise	2017	Isla Vista Halloween; DelTopia		2018	Isla Vista Halloween; DelTopia 1/9 Debris Flow – Montecito		2019	Isla Vista Halloween; DelTopia	Santa Barbara Airport Triannual Drill; Santa Maria Airport Triannual Drill	2020	Isla Vista Halloween; DelTopia		2021	Isla Vista Halloween; DelTopia		2022	Isla Vista Halloween; DelTopia	Santa Barbara Airport Triannual Drill; Santa Maria Airport Triannual Drill
	Real Event		Exercise																				
2017	Isla Vista Halloween; DelTopia																						
2018	Isla Vista Halloween; DelTopia 1/9 Debris Flow – Montecito																						
2019	Isla Vista Halloween; DelTopia		Santa Barbara Airport Triannual Drill; Santa Maria Airport Triannual Drill																				
2020	Isla Vista Halloween; DelTopia																						
2021	Isla Vista Halloween; DelTopia																						
2022	Isla Vista Halloween; DelTopia	Santa Barbara Airport Triannual Drill; Santa Maria Airport Triannual Drill																					
Do you have formal agreements with the following in your operational area to participate in disaster planning and response? a) Hospitals b) Community clinics		<input checked="" type="checkbox"/> Yes <input type="checkbox"/> No <input checked="" type="checkbox"/> Yes <input type="checkbox"/> No																					