



TRIP Status Report

TRIP projects are moving rapidly through the various stages of project development. This report is to provide a periodic up-to-date snapshot of each project's recent major activities and progress. If you have questions, or need additional information, please contact Gilbert Vega at the TRIP office, (661) 326-3700. Regular construction updates are also available on the TRIP website at BakersfieldFreeways.us

MILESTONES

- Completed construction of roadway pavement along westbound State Route 58
- Completed Frame 3 of Connector bridge including the deck pour and post stress

PROJECT STATUS

Centennial Corridor Phase 3 – Bakersfield Freeway Connector

Contractor: Security Paving Company

Project Manager: Ravi Pudipeddi

Status: 97% complete; anticipated completion: April 2023; all new facilities fully open to traffic

This phase of Centennial Corridor consists, in general, of improvements along westbound (WB) State Route (SR) 58 and southbound (SB) SR 99. The improvements include an additional auxiliary lane on WB SR 58, realigning the WB SR 58 to SB SR 99 connector loop ramp, constructing a branch connector for SR 58 to SR 99 and constructing a collector distributor along SB SR 99 for the Ming Ave off-ramps.

- Began construction of concrete barrier and metal beam guard rail along WB SR 58
- Continued miscellaneous punch list work
- Completed construction of roadway pavement at WB SR 58

Centennial Corridor Phase 4 – Mainline

Contractor: Security Paving Company

Project Manager: Ravi Pudipeddi

Status: 87% complete; anticipated completion: End 2023

This phase of Centennial Corridor extends SR 58 westerly from the current terminus as a freeway at SR 99 to Westside Parkway freeway. At the SR 58/SR 99 interchange, the project adds a collector distributor on northbound (NB) SR 99 and new NB to WB connector. The project also includes realignments and new cul-de-sacs at various local roads, widening and realignment of Chester Ave at SR 58, and construction of a traffic signal at the WB SR 58 ramps/Brundage Lane intersection which is part of the SR 58/ Cottonwood interchange.

- Began the final project dirt import located between Real Road and SR 99
- Began the removal of falsework beneath Frame 2 of Connector Bridge
- Continued construction of barrier at the Marella Way Overcrossing

- Continued removal of the last remaining Falsework over Real Road
- Continued slope paving at Stockdale Highway Undercrossing (UC)
- Continued profile grinding of mainline freeway
- Continued construction of curb, gutter, sidewalk, and electrical facilities at the intersection of Stockdale Highway and Stine Road.
- Poured the stem and soffit at Frame 4 of NB SR 99 to WB SR 58 (Connector Bridge) (note: The Connector Bridge is comprised of 4 separate structures with the northwest end being Frame 1 and the southeast end being Frame 4)
- Completed Frame 3 of Connector bridge including the deck pour and post stress

Hosking Interchange Landscaping Improvements

Contractor: Griffith Company for Caltrans

Project Manager: Ravi Pudipeddi

Status: Under construction

Construction of the SR 99/Hosking Avenue Interchange Project began in 2014. However, the landscape portion of the project was removed due to prolonged drought conditions at the time of construction and as necessary to abide with the mandatory reduction of water use required by the state of California Governor's office. In 2021, the City of Bakersfield reestablished a revised drought tolerant plan that integrates more decorative hardscape, drought tolerant plantings, and a high efficiency irrigation system within the Hosking interchange footprint. In coordination with Caltrans, this revised plan is being constructed by Caltrans' contractor, who is finishing the Panama and White Lane Vertical Clearance Project. This is the beginning of an effort to beautify Bakersfield within the freeway system.

- Landscaping consists of drought tolerant plants and hardscape elements including placed stone, textured paving, and decomposed granite.
- Installation of irrigation lines is 100% complete.
- Installation of hardscape is 50% complete.
- Planting is 0% complete.

UPCOMING PROJECTS

Westside Parkway Landscaping (Phase 1) (Centennial Corridor)

Contractor: Parsons Transportation Group

Project Manager: Paul Archer

Status: Design submitted for final review/approval

This project proposes drought tolerant plants, irrigation systems, and hardscape features along the Westside Parkway from the Coffee Road interchange to Truxtun Avenue. Future phases will include Westside Parkway from Coffee interchange to Heath Road and from Truxtun Avenue to Real Road.

- Continued preparation of bid documents
- Projected to bid in late spring 2023 and construction to begin late summer 2023
- Landscaping consists of drought tolerant plants and hardscape elements including placed stone, textured paving, and wood mulch

State Route 58/99 Corridor Enhancement Project

Contractor: Parsons Transportation Group

Project Manager: Ravi Pudipeddi

Status: 30% Design submitted for review/approval

The Environmental Commitments for the Centennial Corridor requires landscape improvements upon completion of the roadway construction. Centennial Corridor runs along the proposed SR 58 from Interstate 5 to Cottonwood Road and is divided into 3 Segments. Segment 1 is the alignment from Truxtun Avenue to Cottonwood Road and along SR 99 from SR 58 to Ming Avenue. The State Route 58/99 Corridor Enhancement Project aesthetically improves the freeway system by implementing hardscape, landscape, and irrigation elements at the SR 99/SR 58 Interchange and along SR 58 from Real Road to H Street. This is part of a greater effort to beautify the City of Bakersfield within the freeway system with drought tolerant planting.

- Final design plans underway
- Landscaping consists of drought tolerant plants and hardscape elements including placed stone, textured paving, decomposed granite, and various themed ground art elements

Centennial North Connector Project and Centennial South Connector Project

Design Consultant: Parsons Transportation Group

Project Manager: Ravi Pudipeddi

Status: North Connector – Preliminary design approved. Design towards 100% in progress.

The Centennial Corridor within the 58/99 interchange does not currently include two connector ramps. These ramps are the eastbound 58 to northbound 99 connector and the southbound 99 to westbound 58 connector. The interim traffic movement for these two connectors after Mainline construction is accounted for via Mohawk Street and Rosedale Highway in both directions. These two standalone projects will begin after the completion of the Mainline Project with an emphasis on TRIP completing the North Connector first, and Caltrans completing the South Connector at a later date.

- Preliminary construction cost estimate of the North Connector Project is at \$20 million
- Final design of North Connector underway

PROJECT PHOTOS



Top Left: Concrete pour along WB SR 58

Top Right: Preparation of roadway base at Stine Road, south of Stockdale Highway

Bottom Left: Installation of electrical facilities along SB SR 99

Bottom Right: Profile grinding of roadway between Truxtun Avenue and Real Road



Upcoming Projects

Hosking Interchange Landscaping Improvements



Top Left and Top Right: Bird's eye view of the interchange looking north and looking west.
Bottom: Layout of proposed hardscape in the 99/Hosking interchange (excluding irrigation and planting)



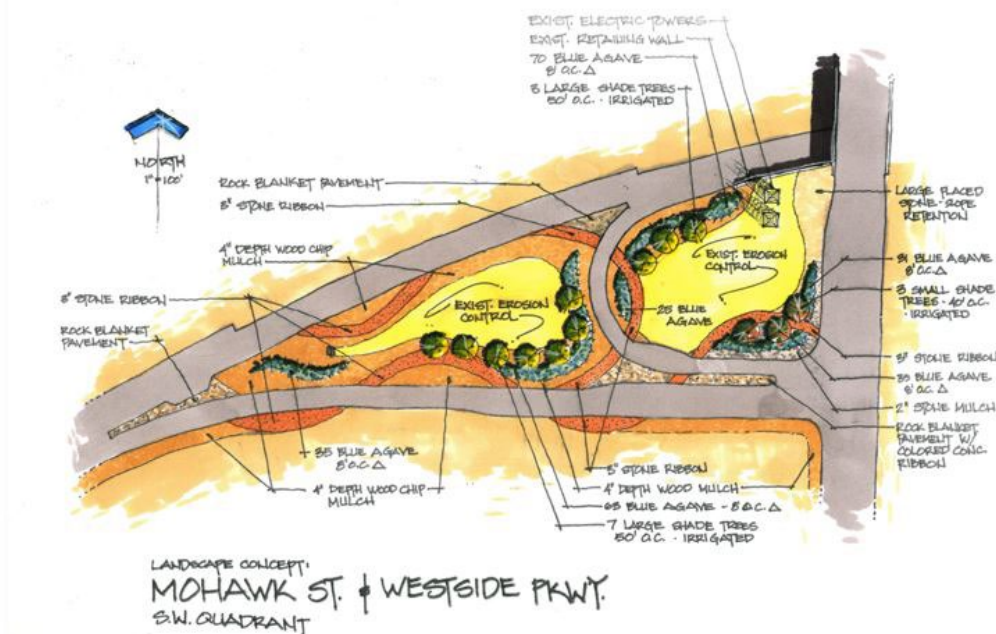
CITY PROPOSED HARDSCAPE AREAS BY TYPE

DG = DECOMPOSED GRANITE

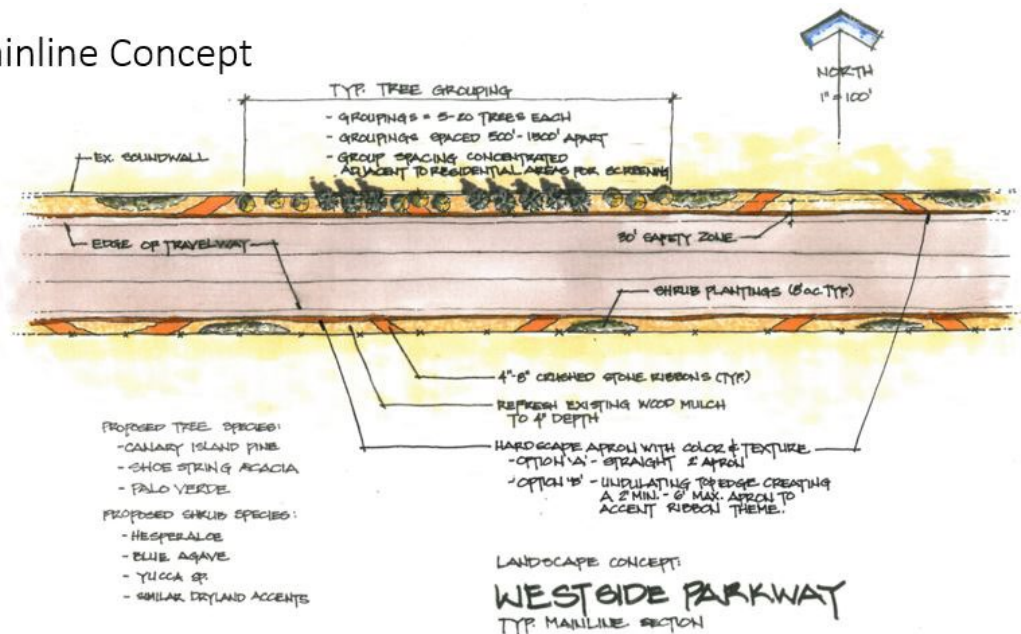
- PLACED STONE
- 6" STONE RIBBON (COWBOY COFFEE DG OPTION)
- 8" TO 10" CRUSHED STONE (GOLD DG OPTION)
- TEXTURED PAVING

Westside Parkway Landscaping

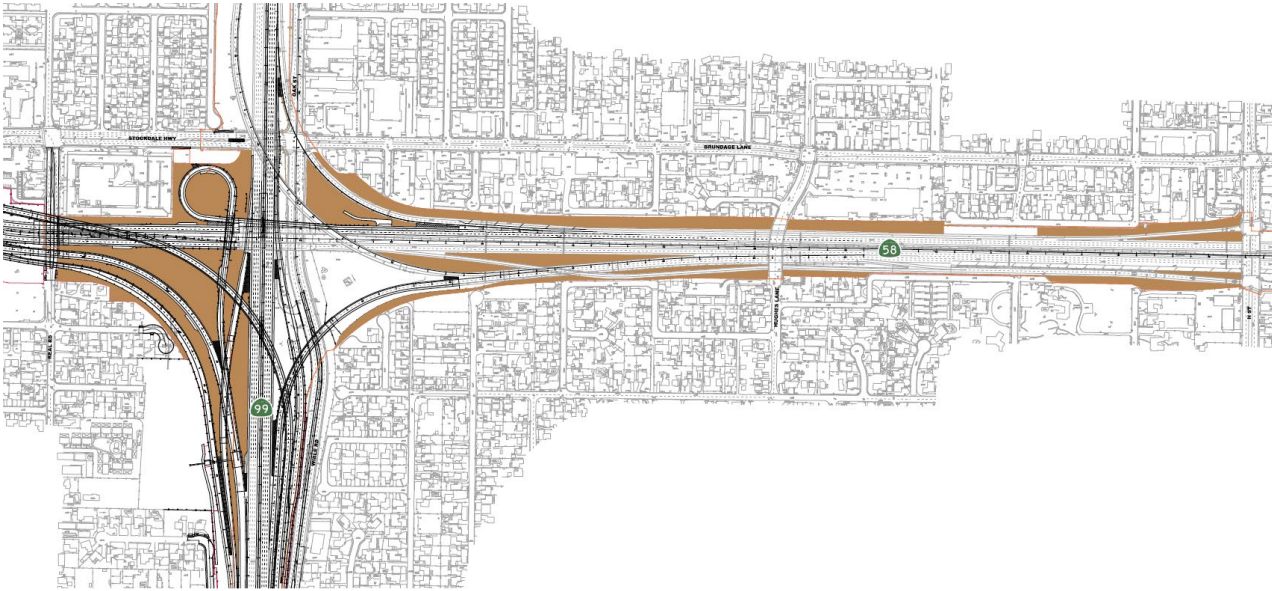
Interchange Concept – Mohawk Quadrant



Mainline Concept



State Route 58/99 Corridor Enhancement Project



Centennial North Connector and South Connector Projects

