

A photograph of a park area. In the foreground, a paved walkway made of reddish-brown stones leads towards a large, white, octagonal gazebo with a red roof. To the left of the walkway, there is a black metal lamp post with two lanterns. The background shows some trees and a clear sky. The entire image is framed by a light blue border.

Sister City Gardens at Mill Creek, Bakersfield

**Part of Mill Creek Linear Park
Downtown Revitalization Project**

Award-Winning Mill Creek Linear Park

Defining Characteristics & Features

- ❖ A meandering 1.5-mile urban trail that connects the downtown area with a multimodal, waterfront path that invites locals and visitors to head outdoors to explore downtown.
- ❖ Central Park is home to the Bakersfield Community House and the Bakersfield Museum of Art.
- ❖ Home of the new Federal Courthouse, adjacent to Central Park
- ❖ Proximity to future Bakersfield High Speed Rail Station and a key attraction for future riders of California's high-speed rail system.
- ❖ The five Sister City Gardens featuring unique designs from each sister city, provide cultural interpretation along the Mill Creek.
- ❖ A model of modern planning that connects a variety of amenities including an antiques shopping corridor, Beale Memorial Library, Amtrak Station, McMurtrey Aquatic Center, Adventist Health Ice Center, Maya Cinemas, and more.
- ❖ Features interesting art and architecture, including a replica flour mill as a testament to the industry that gave rise to the canal and the area.

2017 APA Great Places In America Award

- ❖ October 2017: American Planning Association released its 15 “Great Places in America”.
- ❖ These neighborhoods, public places or streets are celebrated for exemplary planning that results in stronger, healthier, and more just communities.
- ❖ Mill Creek Linear Park in Bakersfield was the only California community to be a designee.
- ❖ The 1.5-mile urban trail won in the “2017 Great Public Spaces” category along with four other projects nationwide: Rosa Parks Circle in Grand Rapids, Michigan; the County Home Complex in Pitt County, North Carolina; Market Square in Knoxville, Tennessee; and San Angelo Concho River Walk in San Angelo, Texas.
- ❖ The APA writes that the park “serves as a national model for how cities and rural communities can repurpose single-use canals into a multi-use focal point for an entire community.”

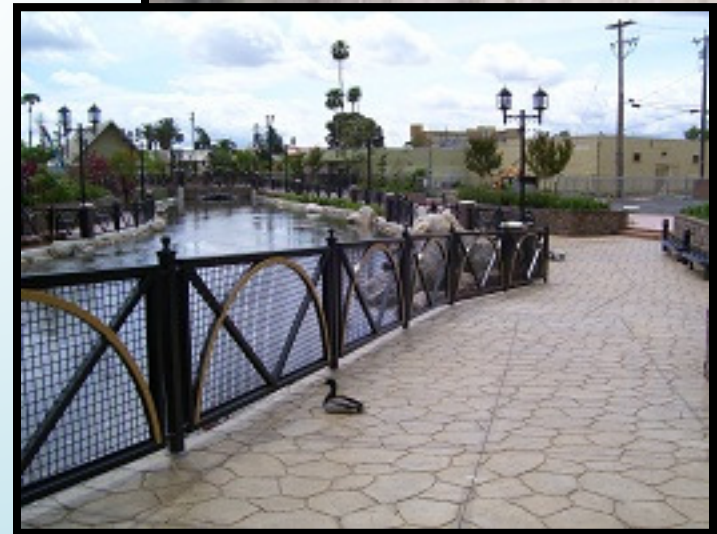
Planning & Financing

- ❖ 2001: Community-Wide Brainstorming Session visualized economic & civic benefits of renovating Central Park, the Kern Island Canal, and nearby buildings.
- ❖ The Kern Delta Water Storage District cooperated with plans to transform the old irrigation canal into a lovely creek.
- ❖ Project design work was headed by Richard Meyer of Meyer Civil Engineering, Inc.
- ❖ Completed in 2010, the 1.5-mile linear park includes a lined, natural-looking creek meandering through downtown Bakersfield.
- ❖ The project improvements totaled \$14.9 million, with \$10 million funded by the State of California Infrastructure Bank fund. Other funding came from Water Resources Enterprise, Redevelopment Tax Increment. No General Fund monies were used.

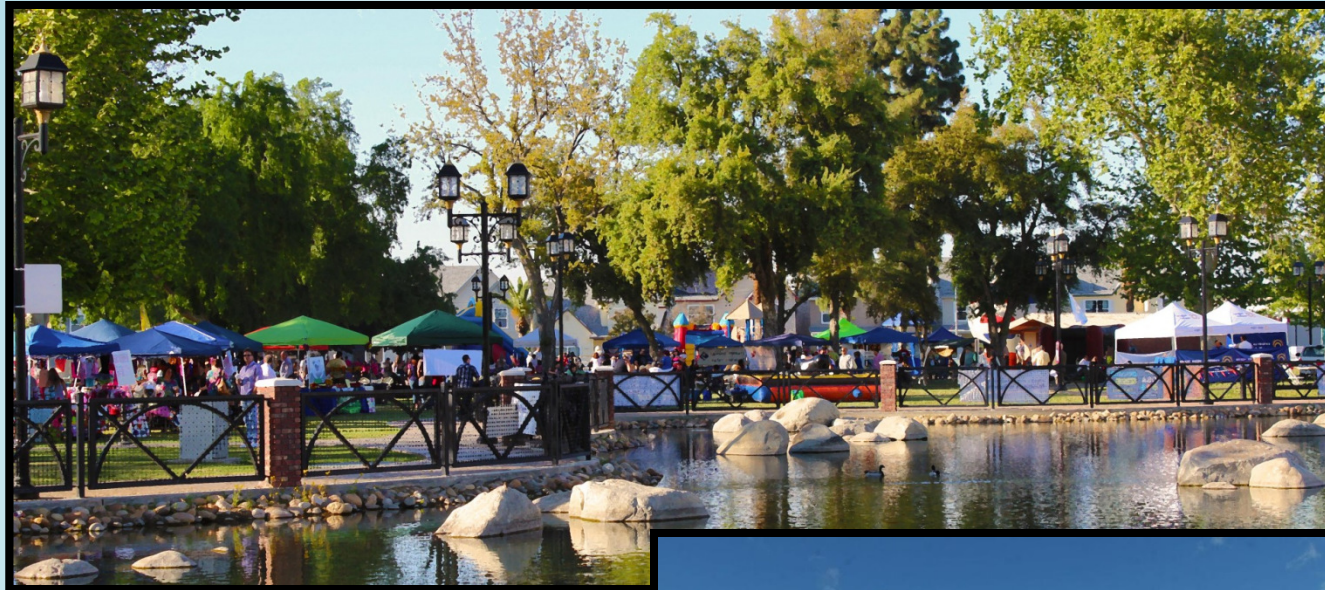
From Irrigation Canal to Mill Creek

A Cinderella Story

- ❖ Formerly an irrigation canal with dirt riverbanks and chain link fencing.
- ❖ Kern Island Canal still irrigates farmland located on the Kern Lakebed, south of Bakersfield.
- ❖ Today, the 1.5 mile-long park that follows the canal's route has fountains, a covered bridge, a lake, the first fully accessible playground, and a mill house.



Central Park at Mill Creek



The \$3.3 million, revamped Central Park boasts the following:

- ❖ 3 million pounds of boulders from the Kern River
- ❖ Spectrum Wireless Hot Spot
- ❖ Pedestrian crossings with signals at 21st and 19th streets
- ❖ Covered bridge







Also located in Central Park:

- ❖ **Bakersfield Community House**
- ❖ **Bakersfield Museum of Art**

Bakersfield Federal Courthouse



- ❖ Completed in 2012
- ❖ The award-winning \$28.6 million, 35,500 square foot courthouse uses 45 percent less energy.

- ❖ Courthouse sits on 2.5 acres overlooking Mill Creek Linear Park.



Mill Creek Neighborhood



**Kern County Library:
Beale Memorial**



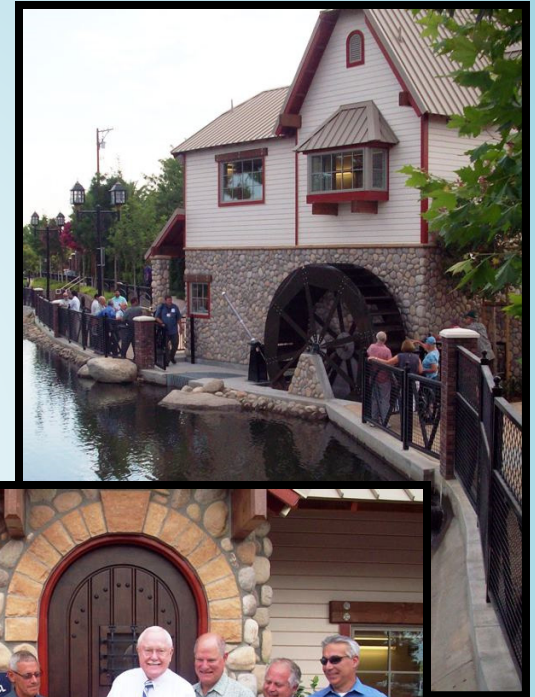
Senior & Mixed Income Housing along Mill Creek



17th Place
TOWNHOMES

The Mill House at Mill Creek

- ❖ A 1,001 square foot cogeneration facility featuring a water wheel, wet bar, loft, patio and Wi-Fi.
- ❖ The working 12 foot by 3 foot metal wheel generates about 2 kilowatts of power at peak production enough to provide electricity for the building and surrounding area.
- ❖ The project was funded with \$667,000 in Capital Outlay Funds and \$273,000 in Proposition 1C money.
- ❖ Designed to be reminiscent of the original flour mill that once stood immediately south.



July 2013



Sister City Gardens at Mill Creek

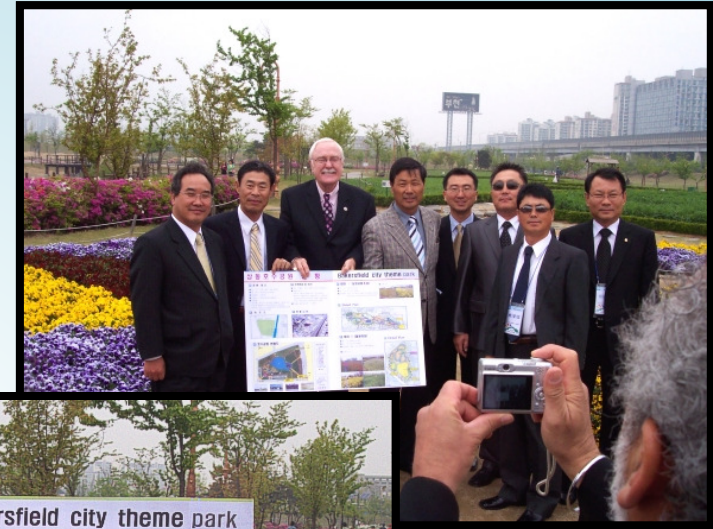
Constructed in two phases

- ❖ Designed by Parsons Corporation & Meyer Civil Engineering, Inc.
- ❖ Phase 1: Completed August 2012
 - ❖ \$1.2 million, funded by grant money.
 - ❖ Located on the south side of 18th Street along Mill Creek
 - ❖ Three gardens honoring Bucheon, South Korea; Cixi, China; Wakayama, Japan
 - ❖ Also includes a covered pavilion & fountain
- ❖ Phase 2: Completed in December 2013
 - ❖ Located on the north side of 18th Street along Mill Creek
 - ❖ Two gardens honoring Amritsar, India & Santiago de Queretaro, Mexico



Inspiration for the Gardens

- ❖ A Sister City Park had long been a dream for Bakersfield Sister City Project Corporation.
- ❖ In 2007, Mayor Hall visited Bucheon, where plans for a new Bakersfield Park were unveiled & the stone sign was dedicated.
- ❖ After seeing the park, Mayor Hall was inspired to urge inclusion of Sister City Gardens in the planning process of the Mill Creek Linear Park.





Garden for Bucheon, South Korea



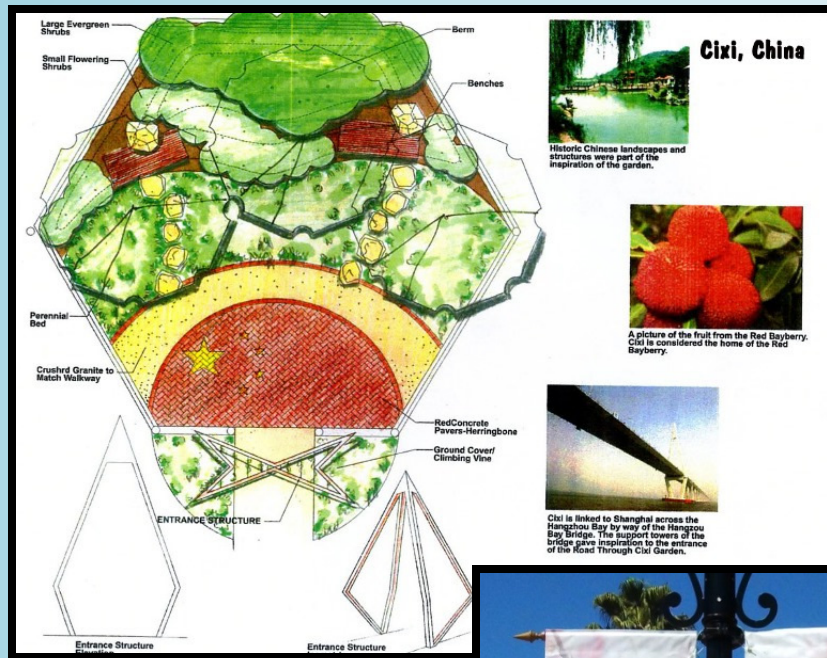


**Mayor Kim &
Councilmember Weir**

In November 2016, Bucheon Mayor Kim Man-soo led a delegation to Bakersfield to celebrate the 10th Anniversary of the Sister City relationship. A highlight of the visit was the dedication of a plaque in the Bucheon Garden.



Garden for Cixi, China



Cixi, China



A picture of the fruit from the Red Bayberry. Cixi is considered the home of the Red Bayberry.



Cixi is linked to Shanghai across the Hangzhou Bay by way of the Hangzhou Bay Bridge. The support towers of the bridge gave inspiration to the entrance of the Hong Through Cixi Garden.



The entrance to the Cixi Garden represents the superstructure of the Hangzhou Bay Bridge that links Cixi to Shanghai.



The Hangzhou Bay Bridge is a highway bridge with a cable-stayed portion across Hangzhou Bay in the eastern coastal region of China. It connects the municipalities of Jiaxing and Ningbo in Zhejiang province.

At 35.673 km (22 miles) in length, Hangzhou Bay Bridge was among the ten longest trans-oceanic bridges.

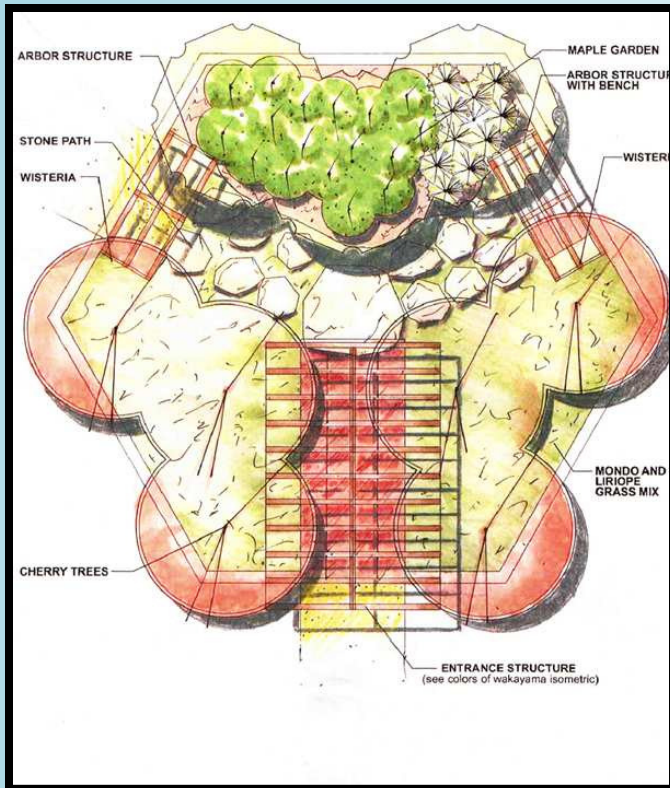




In 2016, the City of Cixi presented a celadon porcelain bell to be displayed in the Cixi Garden.



Garden for Wakayama, Japan



The curving roof beams for the garden pavilion suggest the roof line of Wakayama Castle.

The pathway leads the visitor into the pavilion.





The pathways all lead to a Kasuga - style stone lantern, donated by David Urner. Such lanterns are typical of those found throughout the Kansai region, such as the thousands of lanterns at Koyasan in Wakayama Prefecture.





November 2016
Mayor Hall, Mayor Obana, Councilmembers
Parlier and Sullivan, along with BSCPC
President Hefner plant a cherry tree at the
entrance to the Wakayama Garden.

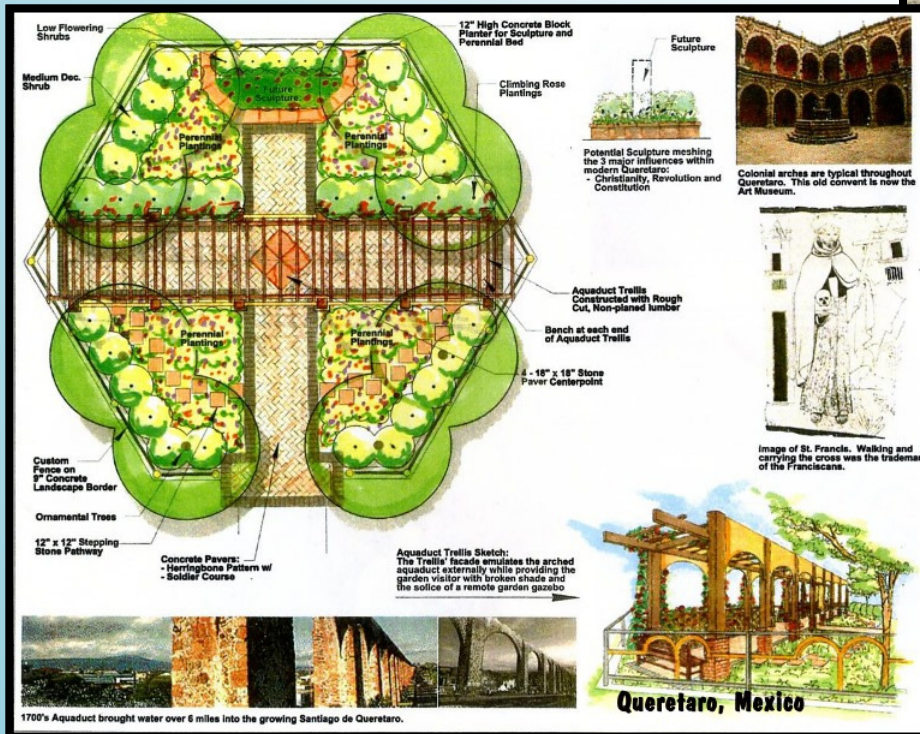
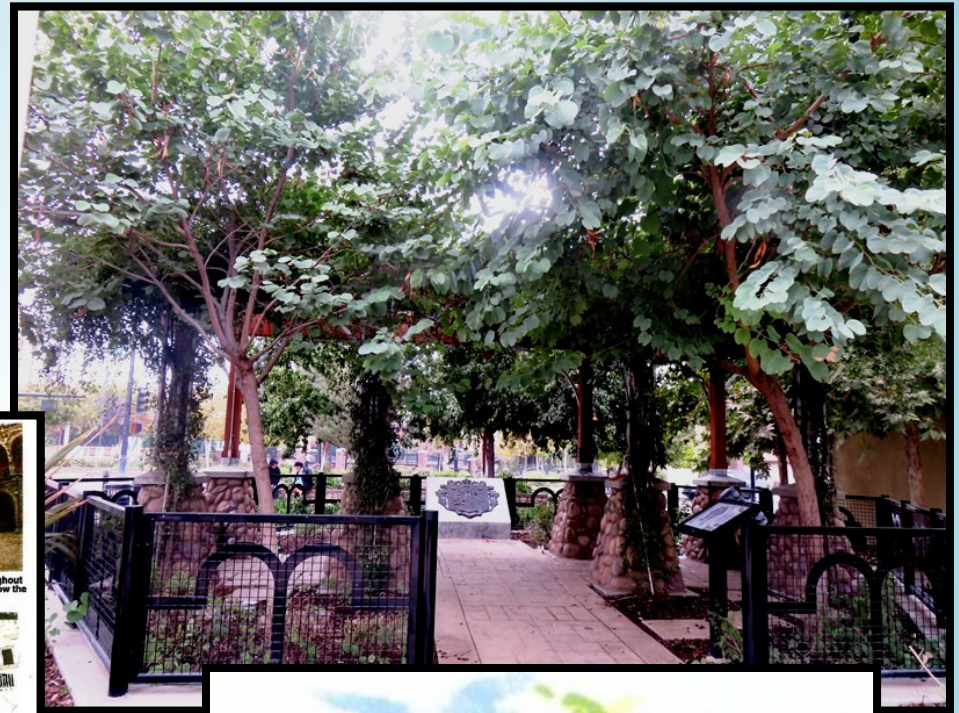


**Mayors Hall & Obana
unveil a plaque honoring
the 55th Anniversary of
the Wakayama -
Bakersfield Sister Cities
relationship & the 300th
Anniversary of the
Inauguration of
Yoshimune Tokugawa as
Shogun of Japan.**



Garden for Santiago de Queretaro, Mexico

The arched pergola echoes the arches of the aqueduct that runs through the historic center of Santiago de Queretaro.

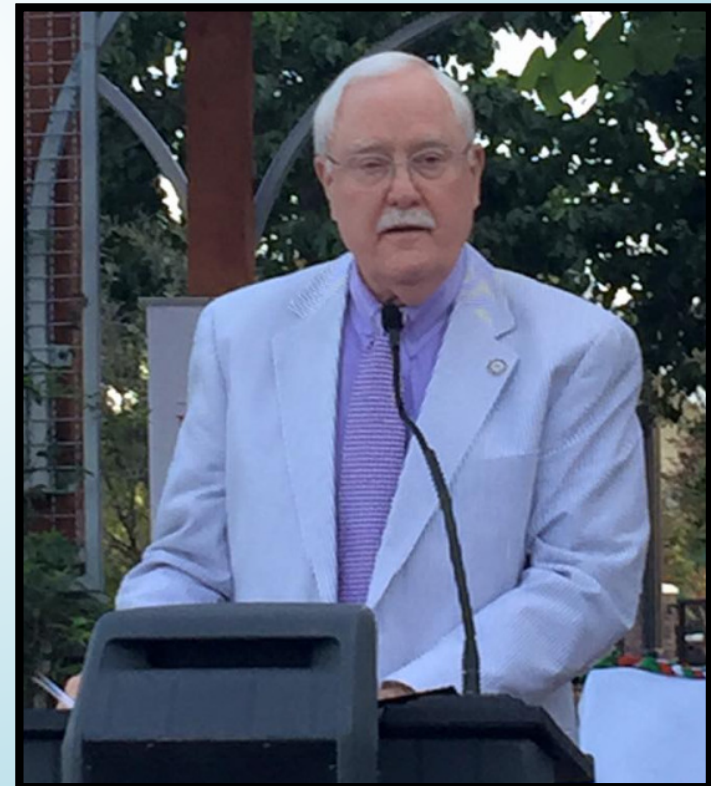




Sanchez Ventura, speaking on behalf of the Consul of Mexico, thanked Mayor Hall and Bakersfield Sister City for continuing this fruitful relationship.

To celebrate the 10th Anniversary of the Sister City relationship, Santiago de Queretaro sent a bronze plaque displaying their City Seal. In October 2015, a ceremony was held to dedicate the plaque. Honored guests included the Honorable Vicente Margarito Sanchez Ventura, Consul of Mexico and California State Senator Andy Vidak.

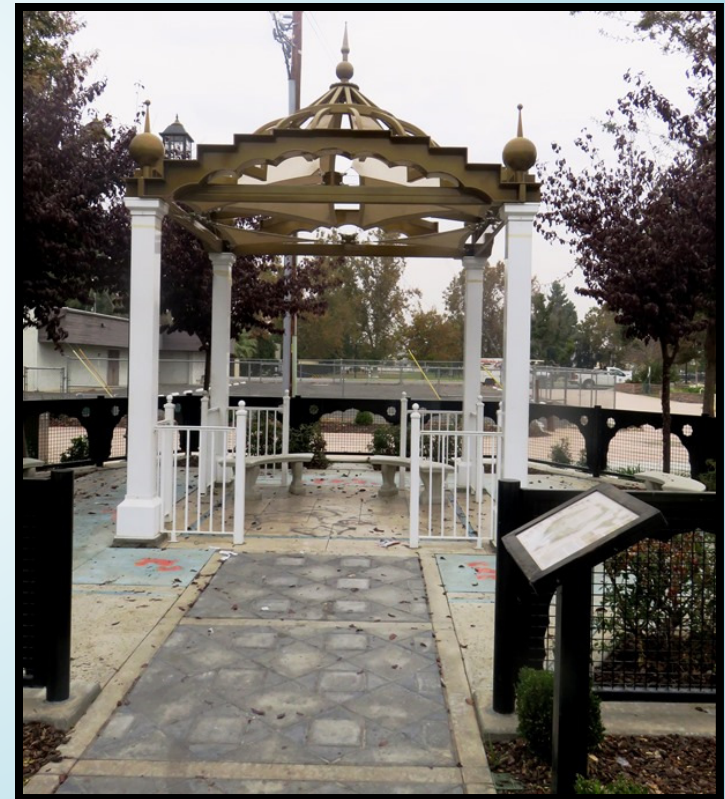




Garden for Amritsar, India



The design of the Amritsar Garden suggests the Golden Temple, holiest shrine of the Sikh religion in India.





The Amritsar Garden is circled by blue-stained concrete inlaid with small fish to echo the lake or pool that surrounds the Golden Temple.



Celebrations at the Sister City Gardens



In 2014, BSCPC joined with Friendship Force of Kern County to celebrate World Friendship Day.







SAVE THE DATE

Bakersfield Sister City

Invites you to join us for a Celebration of Cultural
Diversity & Community Spirit

The First Sister Cities Garden Festival

The Gardens on Mill Creek
18th Street between R and V Streets

Saturday, November 17, 2018

10 am ~ 3 pm

Featuring an International Beer Garden
with Entertainment, Food, Exhibits, & Activities
from each of Bakersfield's Sister Cities

Fun for the whole family!



