

WINTER EDITION JANUARY FEBRUARY 2022

News, Information, Activities and Program Opportunities from The Branch Connection

Valentine Show

Friday, February 11 | 1 p.m.

Fee: Free for Members/\$5 for Non-members. Limited seating available. Registration is required and participants must bring their own saucer and tea cup.

Valentine's Day isn't just for romance, it's a time to celebrate all of the people in your life that you care about. Bring your special someone to The Branch Connection to enjoy great entertainment, delectable delights and a spot of tea.



Super Bowl LIVE Party

Sunday, February 13 | 6 p.m.

Fee: Free for Members/\$5 for Non-members

Snacks Sponsored by Oak Street Health

Party with The Branch Connection for the Big Game! Bring your friends for some camaraderie and light-hearted competitiveness as we watch the game on the big screen. Game Day treats, games and prizes.

MONDAY NIGHT DANCES

Best 50+ Dance in the Metroplex!

7 - 9 p.m.

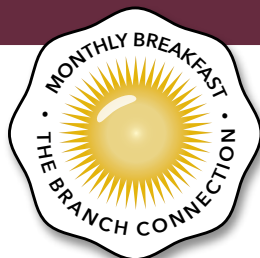
Free for Members | \$5 for Non-members

DATE	BAND
January 3	City Lights
January 10	Micah Johnson
January 17	Danny Romo
January 24	Sinatra Night
January 31	Swinganova
February 7	City Lights
February 14	DFW Musicmakers
February 21	Danny Romo
February 28	Swinganova

Monthly Breakfast

Members: Free; Non-members: \$5
Mondays | January 3, February 7
8:15 - 9 a.m.

Come enjoy a free breakfast and meet up with old friends and make new ones at the monthly breakfast! The Senior Advisory Board hosts the event and provides a fun atmosphere to start the month.



TRIPS

Registration required by calling 972-919-8740.

CRUISIN CUISINE:

Grimaldi's Highland Village

Friday, January 14 | 10:45 a.m. (Bus Departure)

Fee: \$5 + Bring money for lunch

1101 Shoal Creek, Suite 110 - Highland Village, TX 75077

Grimaldi's has been creating outstanding coal brick-oven fired pizzas for 100 years! Experience the tradition with us at the Highland Village location.

DAY TRIP:

Michelangelo's Sistine Chapel

Thursday, February 10 | 9:30 a.m. (Bus Departure)

Fee: \$20 + money for lunch

This unique exhibition in Dallas invites you to step into the universe of the greatest masterpieces of Michelangelo, seen from a totally new perspective. It is brought to you by the organizers of the finest themed exhibitions such as: Star Trek, King Tut, Titanic, Frida Kahlo and Michael Jackson.



14055 Dennis Lane | Farmers Branch, Texas 75234 | 972.919.8740



www.thebranchconnection.com



www.facebook.com/farmersbranchseniors

ARTS AND CRAFTS

Pre-registration required for all craft classes by calling 972-919-8740.

Free Arts and Crafts Groups

Quilting Group	Friday 10 a.m.
Instructional Quilting	Thursday 1 - 3 p.m.
Evening Crafts	Monday 5 - 8 p.m.

Acrylic Abstract

Guest Artist: Lisa Temple

Tuesday | January 18 | 10 a.m. to Noon | Free

(Artist Demonstration)

Tuesday | January 18 | 1 - 3 p.m. | \$10 (Workshop)

"Emotion in Motion - Light, Form and Color Moving In and Out of Each Other"

Advanced Greeting Card Class

Tuesday | January 11, February 8 | 1 p.m.

Supply Fee: \$10

Instructors: Jan McCord & Carmel Mosley

Learn various card making techniques and create four beautiful cards.

DIY Painting Party

Monday | January 17 | 1 - 2:30 p.m.

Wednesday | February 16 | 6 - 7:30 p.m.

Supply Fee: \$25 | Instructor: Calinda Locklear

Beginner to experienced, everyone is welcome to come paint! We provide all the supplies, you just come and have fun. We paint pieces for home décor to seasonal and gift giving. No special skills are needed for this kind of painting.

NEW>> Cricut Maker for Beginners

Tuesday | January 18 | 4 - 7 p.m.

Free | Instructor: Jennifer Stone

There are so many materials, tools and methods to use one of the greatest crafting tools yet. Join TBC staff to learn a small fraction about this powerful machine. Bring a solid color t-shirt and TBC will print a Valentine graphic for you to weed and iron on.



Simple Serging

DIY Fabric

Phone Charging Station

Tuesday | January 25

4 - 7:30 p.m. | Free

In this Simple Serging class, you will learn how simple it is to use a serger and a sewing machine. Come learn the basics of overlock stitching. You are welcome to bring your fabric (two coordinating fabrics, fat quarter size) and notions (like your

own sharp scissors), but we will have plenty to share.



Advanced Sewing

Travel Manicure Kit

Tuesday | February 22 & 29 | 4 - 6 p.m.

Supply Fee: \$5

Students must have a working knowledge of how to operate a sewing machine. Just getting started? Take our Simple Serging Class. You are welcome to bring your fabric (three coordinating fabrics, fat quarter size) and notions (like your own sharp scissors), but we will have plenty to share. A supply fee will be required at the time of class registration.

Multimedia Paint-Along

Tuesday | February 15 | 10 a.m. to 1 p.m.

Free (Artist Demonstration)

Participants are invited to bring their own supplies for individual instruction in watercolor, acrylic or alcohol ink painting as well as portraiture instruction.

COMPUTER CLASSES

Registration is required by calling 972-919-8740.

Computer Basics - Part 1

Mondays & Thursdays | January 10 thru February 3

1 - 3 p.m. | Free | Instructor: Linda Eakle

Get back to the basics! This course teaches all the basics including internet and email. When you complete this class, you will be able to run your personal computer without hesitation. Students will also learn how programs and other information are organized on the computer.

Computer Basics - Part 2

Mondays & Thursdays | February 1 - 24 | 1 - 3 p.m. | Free

Instructor: Linda Eakle

Further your skills! This course expands on all the basics taught in Computer Basics Part 1.

Windows Tips and Tricks

Wednesday | January 12 | 9 - 11 a.m. | Free

Instructor: Linda Eakle

Open discussions of Windows 10 and 11.

FITNESS CLASSES

Registration required by calling 972-919-8740.

You must pre-register for all classes and programs one month in advance. Fitness Class registration for residents begins the first Monday of each month. Open Registration for non-residents begins the second Monday of each month. For example, you will register for February classes in January.

NEW CLASS>> Zumba Gold

Wednesday | First Day January 12 | 6 - 6:45 p.m.

Free | Instructor: Giselle Huet

Zumba Gold is a modified Zumba class for active adults that recreates the original moves you love at a lower intensity. This class introduces easy-to-follow Zumba choreography that focuses on balance, range of motion and coordination for a low-impact workout.

Stretch & Release

Monday | 10 - 10:45 a.m.

Free | Instructor: Jyoti

Mindful Yoga

(Doors will secure at 10:05 a.m. - Please do not disturb)

Tuesdays, Thursdays | 10 - 10:45 a.m.

Free | Instructor: Rotha Crump

Silver Sneakers Classic

Mondays | 11 - 11:45 a.m.

Wednesdays | 1 - 1:45 p.m.

Free | Instructor: Jyoti

Balanced Bodies

(Doors will secure at 10:05 a.m. - Please do not disturb)

Tuesdays, Thursdays | 9 - 9:45 a.m.

Free | Instructor: Rotha Crump

Tai Chi

Mondays, Wednesdays | 10 - 10:45 a.m.

Free | Instructor: Susan Davis & Henry Sih

Power Walking

New Time>> Fridays | 9 a.m.

Free | Instructor: Laura Franklin

This is an exercise technique that emphasizes speed and arm motion as a means of increasing health benefits. Done correctly, regular power walking is good for your cardiovascular health, joint health and emotional well-being.

**AVAILABLE FOR
A LIMITED TIME!**

ADVERTISE HERE NOW!

**Contact Brett Reineck
to place an ad today!**

breineck@lpicommunities.com

or (800) 950-9952 x2511

WE'RE HIRING

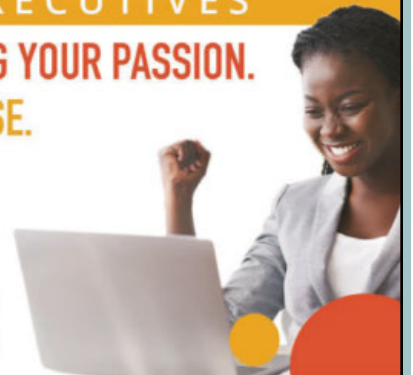
AD SALES EXECUTIVES

**BE YOURSELF. BRING YOUR PASSION.
WORK WITH PURPOSE.**

- Paid Training
- Some Travel
- Work-Life Balance
- Full-Time with Benefits
- Serve Your Community



Contact us at careers@4lpi.com
www.4lpi.com/careers



For ad info. call 1-800-950-9952 • www.lpicommunities.com

City Of Farmers Branch, Farmers Branch, TX

A 4C 05-1243

SPECIAL INTERESTS

Registration required by calling 972-919-8740.

Open Mahjongg

Wednesday | 1 p.m. | Free

Join us for a friendly game of American Mahjongg. We welcome experienced players, as well as those newer to the game, for casual, non-competitive play.

NEW CLASS>> Learn to Play Mahjongg

Wednesday | 3 p.m. | Free

We welcome beginners and first-time players to come in and learn the basics of Mahjongg.

Bridge

One of the greatest card games of all and can provide an immense challenge and enjoyment in a fun group setting. Grab a friend and join us!

Party Bridge

Fridays | 1 p.m.

Free | Instructor: Diane Royer

Duplicate Bridge

Mondays | 9:30 a.m.

Free | Instructor: Diane Royer

Cookin' Club

Caesar Salad

Wednesday | January 12 | 10:30 a.m. to Noon

Come learn how to make a wonderful homemade Caesar salad and share fun salad tips!

Sweets For My Sweetie

Wednesday | February 9 | 10:30 a.m. to Noon

The way to a person's heart is through their stomach! Make the journey sweeter with special Valentine goodies.

Chair Volleyball

Mondays & Thursdays | 1 p.m. | Free

Fridays | 2:30 p.m. | Free

Snacks Sponsored by Oak Street Health on 1/12, 1/28, 2/10, & 2/25

Chair Volleyball involves physical activity, social interaction, competition, and most of all, lots of laughs!

Fly Tying Group

2nd, 3rd, 4th Monday | 5 - 8 p.m. | Free

Instructor: Bill Slaughter

Have you ever wanted to explore the fascinating world of tying your own flies? Here's a chance to learn the basics of fly tying. Just show up and we will provide the vise and materials to tie and get you started. If you are an experienced or seasoned Fly-Tying pro, just bring your equipment and tie with us. Lots of fishing stories and good friends just hanging out enjoying their hobby.

Alzheimer's Support Group

Tuesday | January 4, February 1 | 6:30 p.m. | Free

This group meets the 1st Tuesday of each month at 6:30 p.m. and is open to anyone with Alzheimer's disease or anyone who cares for someone with the disease.

Wii Bowling

Tuesdays and Wednesdays | Free

Grab your team of two or more players and compete together against other teams. Register your team at the front desk. Let us know if you need a team, and we'll try to put one together for you. If you are interested, join us for an open end of season party on January 14 or March 18.

Season IV Party January 14 | 2 p.m.

Season I Starts January 17 | 2 p.m.

Season I Party March 17 | 2 p.m.

Texas Hold 'Em

Thursday | January 20, February 17 | 1 p.m. | Free

Snacks Sponsored by Oak Street Health

Know when to hold 'em; know when to fold 'em. Join us each month for a competitive poker game.

Clogging

Easy to High Intermediate Skill

Fridays | 9:30 a.m. to Noon | Free

Instructor: Libby Smith

American Folk Dance in which the dancers perform with double tap shoes by striking the heel, the toe or both against a floor or each other to create audible rhythms.

Intermediate/Advance Table Tennis

Wednesday & Friday | 2:30 p.m. | Free

Improve your skills with members who range from recreational players to elite players who compete in local and national tournaments year-round. Excellence and sportsmanship are promoted in a safe and friendly environment.

Tuesday Trivia Night

Golden Age of Television | January 25 | 6 p.m. | Free

Test your random memory on all the television shows from the Golden Age of Television! How much do you remember about your favorites shows while growing up?

Movies, Movies, Movies! | February 22 | 6 p.m. | Free

See how much you know about movies throughout the history of Hollywood.

ACTIVITIES

Registration required by calling 972-919-8740.

DROP-IN RECREATION: The game room is open to The Branch Connection members during facility hours for drop-in recreation such as cards and dominos.

Experiencing Brain Fog?

Thinkabilities is Here to Help!

Mondays | 9:15 a.m. | Free

Instructor: Anna Abner

Shared Moments

Mondays | January 3 & 17, February 7 & 21

10:15 a.m. | Free

Shared Movies

Mondays | January 10 & 24, February 14 & 28

10:15 a.m. | Free

Watch movie favorites with others who love them too!

Sign-up to bring your favorite movie. All are welcome!

January 10: The King and I

January 24: Michael Clayton

February 14: Seven Brides for Seven Brothers

February 28: Jack Reacher

New>> Texas 42 (using Dominos)

Wednesday | 1 p.m. | Free | Instructor: Bill Slaughter

Have you ever wondered how to "get your game on" with Texas 42? Join Bill Slaughter for lessons from beginner and beyond to learn the game.

Mountain Dulcimer

Learn to play better by practicing in a small group weekly.

Dulcimer Lessons for Beginners

Tuesdays | 8:30 - 9:30 a.m. | Free

Instructor: Donna Shelton

Southwind Dulcimer

Tuesdays | 10 a.m. to Noon | Free

Instructor: Donna Shelton

Intermediate Mountain Dulcimer Group

Wednesdays | 10 a.m. to Noon | Free

Instructors: Marcella Houston & Joan Roberts

ADT-Monitored Home Security

Get 24-Hour Protection
From a Name You Can Trust

- Burglary
- Flood Detection
- Fire Safety
- Carbon Monoxide



Authorized
Provider

SafeStreets

1-855-225-4251

Thrive Locally



Research Volunteers Needed

- Hypertension
- Constipation
- Athletes Foot
- Psoriasis
- Cosmetic Studies
- Acne

9 Medical Parkway Plaza 4, Suite 304, Dallas, TX 75234 • www.waycro.com

Contact DFW Clinical Research 469-225-5800

SUPPORT OUR ADVERTISERS!



For ad info. call 1-800-950-9952 • www.lpicommunities.com

City Of Farmers Branch, Farmers Branch, TX

B 4C 05-1243

ACTIVITIES

Registration required by calling 972-919-8740.

Line Dancing

Instructor: Karen Aubrey

Whatever your level may be, come learn Line Dancing step- by- step at a comfortable pace with:

ABSOLUTE BEGINNER | Tuesdays | 11:30 a.m. to 12:15 p.m.

This class will run for 11 weeks

Starts January 18 through Tuesday, March 29

This is a special class for students who want to learn the basic steps of Line Dance, and a few easy fun dances. Students should register for all 11 weeks. Cost per class \$2.50. Total cost for 11 weeks \$27.50

LO BEGINNER | Tuesdays | 12:30 p.m. - 1:45 p.m.

January - \$10/February - \$10

HI BEGINNER | Tuesdays | 2 p.m. - 3:15 p.m.

January - \$10/February - \$10

IMPROVER | Wednesdays | 10 - 11:30 a.m.

January - \$12/February - \$12

Garden Group

Gardening on a Shoestring: Confessions of a Frugal Gardener

Wednesday | January 19 | 10 a.m. | Free

Speaker: Dallas County Master Gardener Speaker
Fran Powell

Learn tips for the best value to help bring your garden to life without stressing the cost.

Meeting ID: 811 1668 7744

Passcode: 547212

Gardening for the Love of Birds, Bees and Butterflies

Wednesday | February 16 | 10 a.m. | Free

Speaker: Dallas County Master Gardener Speaker
Nancy Wilson

Learn the most beneficial and effective ways to create landscape to attract birds, bees and butterflies.

Meeting ID: 811 1668 7744

Passcode: 547212

Bingo

Wednesday | January 5 & 19, February 2 & 16 | 1 - 3 p.m.

Sponsored by Oak Street Health

\$1 per Bingo card | Must purchase cards by 12:45 p.m.

Come enjoy BINGO and bring a friend. Good luck!

Limited space so call 972-919-8740 to register.

Photo Club

Wednesday | January 5 & 19, February 2 & 16 | 1 p.m. Free

| Instructor: Deborah Hutchins

Share your experience and learn from others to make

your pictures better. Members regularly challenge each other to capture certain subjects and share those pictures through a group email, which is great for those who don't feel safe coming out and joining the small group meetings. Anyone with a camera or smartphone camera is welcome!

Camera 101

Wednesday | January 12 & 26 | 1 p.m.

January Topic: Flash and Prime Lenses

Discuss cameras, settings and how to make the best images for those special memories.

Wednesday | February 9 & 23 | 1 p.m.

February Topic: **NEW CLASS>> Show and Tell**

Discuss cameras, settings and how to make the best images for those special memories.

Random Acts of Kindness

The Random Acts of Kindness Group does many amazing things, like collecting and giving food and supplies to those in need. You can get involved monthly by dropping off the needed items, and we make sure they get to that month's charity. Thank you for your kindness.

Farmers Branch Animal Adoption Center

Thursday | February 10 | 11 a.m. | Free

Collecting donations of dog food, cat food, kitty litter, towels, blankets, bedding, treats and toys. Save your scrap pieces of fabric for dog beds made by the crafting group throughout the year.

Book Club

Come meet kindred book lovers, as they discuss the reading of a different book each month.

***When I Was Puerto Rican* by Esmeralda Santiago**

Monday | January 10 | 1 p.m. | Free

Genre: Memoir, Personal Narrative

Follow Up Movie | Monday | January 17 | 1 p.m. | Free

***The Midnight Library* by Matt Haig**

Monday | February 14 | 1 p.m. | Free

Genre: Post-Apocalypse Science Fiction

Follow Up Movie | Monday | February 21 | 1 p.m. | Free

Movie Friday

French Kiss

Friday | February 18 | 11 a.m. to 1 p.m. | Free

Snacks: Popcorn and Soda

In this movie starring Meg Ryan, Kevin Kline and Timothy Hutton, a woman flies to France to confront her straying fiancé encounters trouble when the charming crook seated next to her uses her for smuggling.

ACTIVITIES

Registration required by calling 972-919-8740.

An Exercise in Critical Thinking; Conversations in Neglected History

Fridays on Zoom and In Person | 9:30 a.m.

Topic and Speaker Schedule

(Special Guest Speakers in BOLD)

Date	Topic	Presenter
1/7	The Iconic DC3 Airliner	Dick Royer
1/14	Cuban Crisis	Tommy Thompson
1/21	Mini Topics	Jesse Spurway
1/28	Casa Navarro History	Kristin Hernandez from The Texas Historic Commission
2/4	Mini Topics	Jesse Spurway
2/11	Women Trail Blazers	Priscilla Mowinkel
2/18	Jefferson/Adams Letters	Dr. Jay Teng
2/25	Magoffin Home History	Machelle Wood from The Texas Historic Commission

B12 Shots

Thursday | January 6, February 3 | 9 - 9:30 a.m.

\$20 | Pro Salutem

Notary Public

2nd Monday 9 - 10 a.m.

January 10 | February 15 | Free

Volunteer Notary: Maxine Pride

Educational Talks: Health and Wellness Topics

Tuesdays | 6 - 7:15 p.m. | Free

Instructor: Presented by TOPS

Come and learn some educational tips on improving your health and managing weight. Each week we discuss various topics on health and self-improvement.

advance dental

**\$0 Cleaning & \$0 Whitening
for New Patients
with PPO Insurance**

**20% Off
for Senior Citizens**

*Family focused dentistry located
in the heart of Farmers Branch*

Dr. Lauren Lewellen, DDS

13350 Josey Lane, Farmers Branch, TX 75234

972-241-1934

www.advancedental.com



NEVER MISS A NEWSLETTER!

Sign up to have our newsletter emailed
to you at www.mycommunityonline.com



**AVAILABLE FOR
A LIMITED TIME!**

ADVERTISE HERE NOW!

Contact **Brett Reineck**
to place an ad today!

breineck@lpicommunities.com
or **(800) 950-9952 x2511**



For ad info. call 1-800-950-9952 • www.lpicommunities.com

City Of Farmers Branch, Farmers Branch, TX

C 4C 05-1243

MEMBERSHIP

You may qualify for a FREE Membership

Most health insurance plans offer programs to help you maintain a healthy lifestyle as an active adult through physical and social activity. Bring in your insurance card or call at 972-919-8740 and staff will check if you qualify. Plans we partner with are Silver Sneakers, Silver & Fit and Renew Active!

MEMBERSHIP

The Branch Connection is open to anyone 50 years of age or older. A variety of activities and special events are offered to promote fun, fellowship and health.

YEARLY MEMBERSHIP FEES

Resident:	\$25
Non-resident:	\$50
Non-member Day Pass:	\$5
Replacement ID Card:	\$5

Participation in Special Events does not require a membership.

The fee can be paid on a monthly electronic bank draft or credit card draft of \$2.50 or \$5 per month.

FACILITY HOURS

Monday - Wednesday	8 a.m. to 8 p.m.
Thursday & Friday	8 a.m. to 5 p.m.
Saturday	1 - 5 p.m.

HOLIDAY FACILITY CLOSURES FOR THE BRANCH CONNECTION

January 1 for New Year's Day

Our program calendars are available at:
www.TheBranchConnection.com



THE BRANCH CONNECTION STAFF

Jackie Byles, Manager
Jennifer Stone, Recreation Supervisor
Lynnette Hill, Recreation Supervisor

TO VOLUNTEER

Contact **Jennifer Stone**
jennifer.stone@farmersbranchtx.gov
972-919-8742

Gatherings[®]

AT MERCER CROSSING



55+ ACTIVE-ADULT CONDOS IN FARMERS BRANCH

NEW ENERGY EFFICIENT HOMES UP TO 2,031 SQ. FT.

FROM THE \$290s

GATHERINGS.COM | 972-294-7045

Tour our models at
1735 Wittington Place, Farmers Branch, TX



Elevator and
controlled-access entry



Plans with open
living spaces



Private balconies



Garage for
every home



Prices, offers, features and availability subject to change without notice. See New Home Counselor for details.
©2019 Beazer Homes - All Rights Reserved. 158053 BH DAL AUG_1



For ad info. call 1-800-950-9952 • www.lpicommunities.com

City Of Farmers Branch, Farmers Branch, TX

D 4C 05-1243