





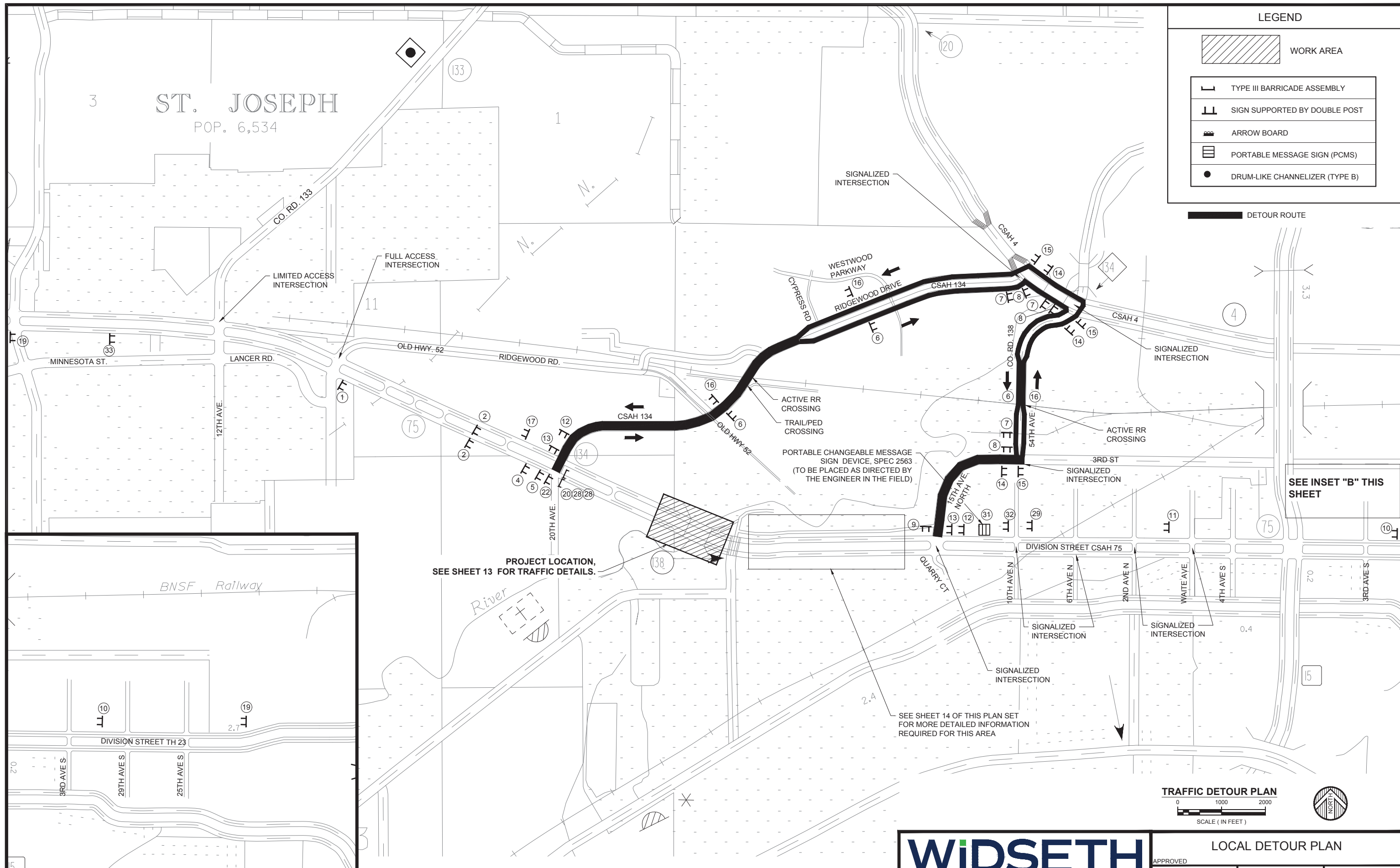


**LEGEND**

-  WORK AREA
-  TYPE III BARRICADE ASSEMBLY
-  SIGN SUPPORTED BY DOUBLE POST
-  ARROW BOARD
-  PORTABLE MESSAGE SIGN (PCMS)
-  DRUM-LIKE CHANNELIZER (TYPE B)

 DETOUR ROUTE



SEE INSET "B" THIS SHEET

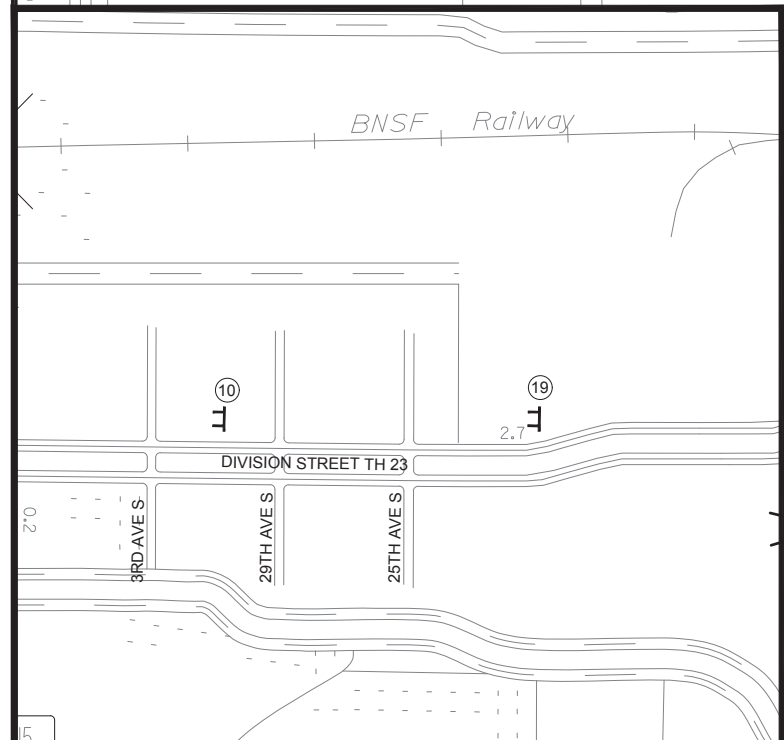
PROJECT LOCATION, SEE SHEET 13 FOR TRAFFIC DETAILS.

SEE SHEET 14 OF THIS PLAN SET FOR MORE DETAILED INFORMATION REQUIRED FOR THIS AREA

**TRAFFIC DETOUR PLAN**

0 1000 2000

SCALE (IN FEET)

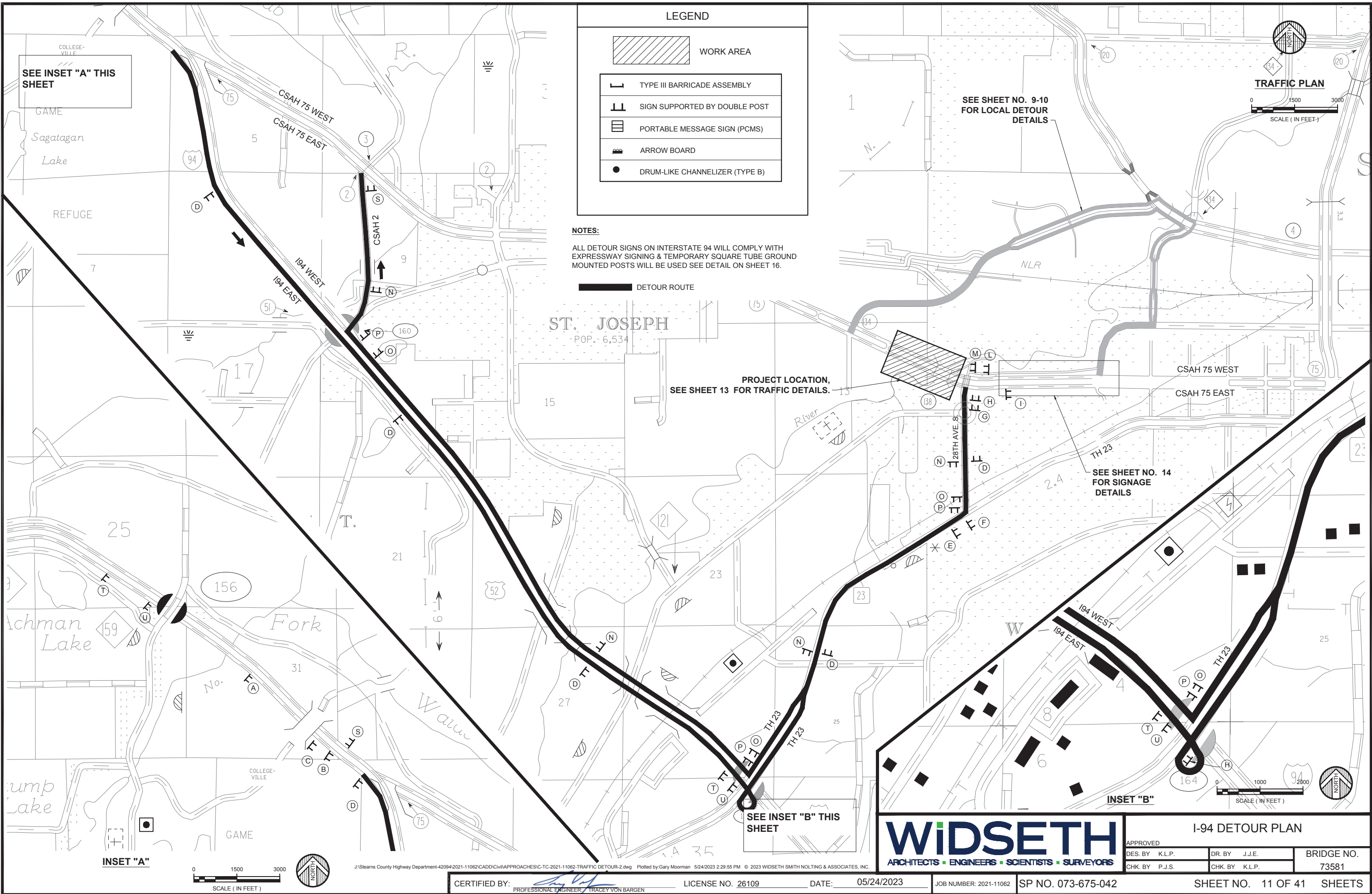


**INSET "B"**  
NOT TO SCALE

J:\Stearns County Highway Department-42094\2021-11062\CADD\Civil\APPROACHES\TC-2021-11062-TRAFFIC DETOUR.dwg Plotted by Gary Mooman 5/24/2023 2:29:26 PM © 2023 WIDSETH SMITH NOLTING & ASSOCIATES, INC.

**WIDSETH**  
ARCHITECTS • ENGINEERS • SCIENTISTS • SURVEYORS

LOCAL DETOUR PLAN			
APPROVED			
DES. BY K.L.P.	DR. BY J.J.E.	BRIDGE NO. 73581	
CHK. BY P.J.S.	CHK. BY K.L.P.		

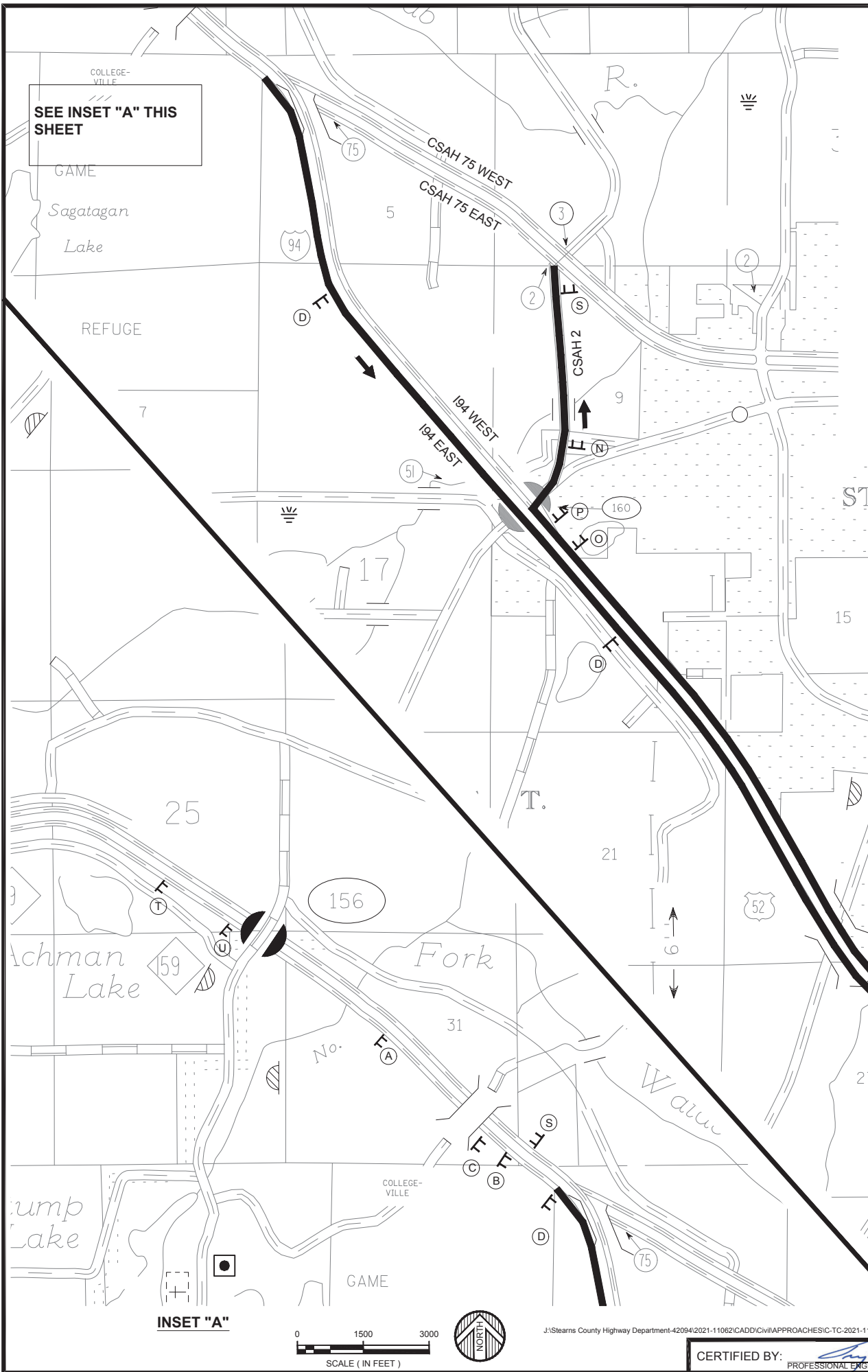
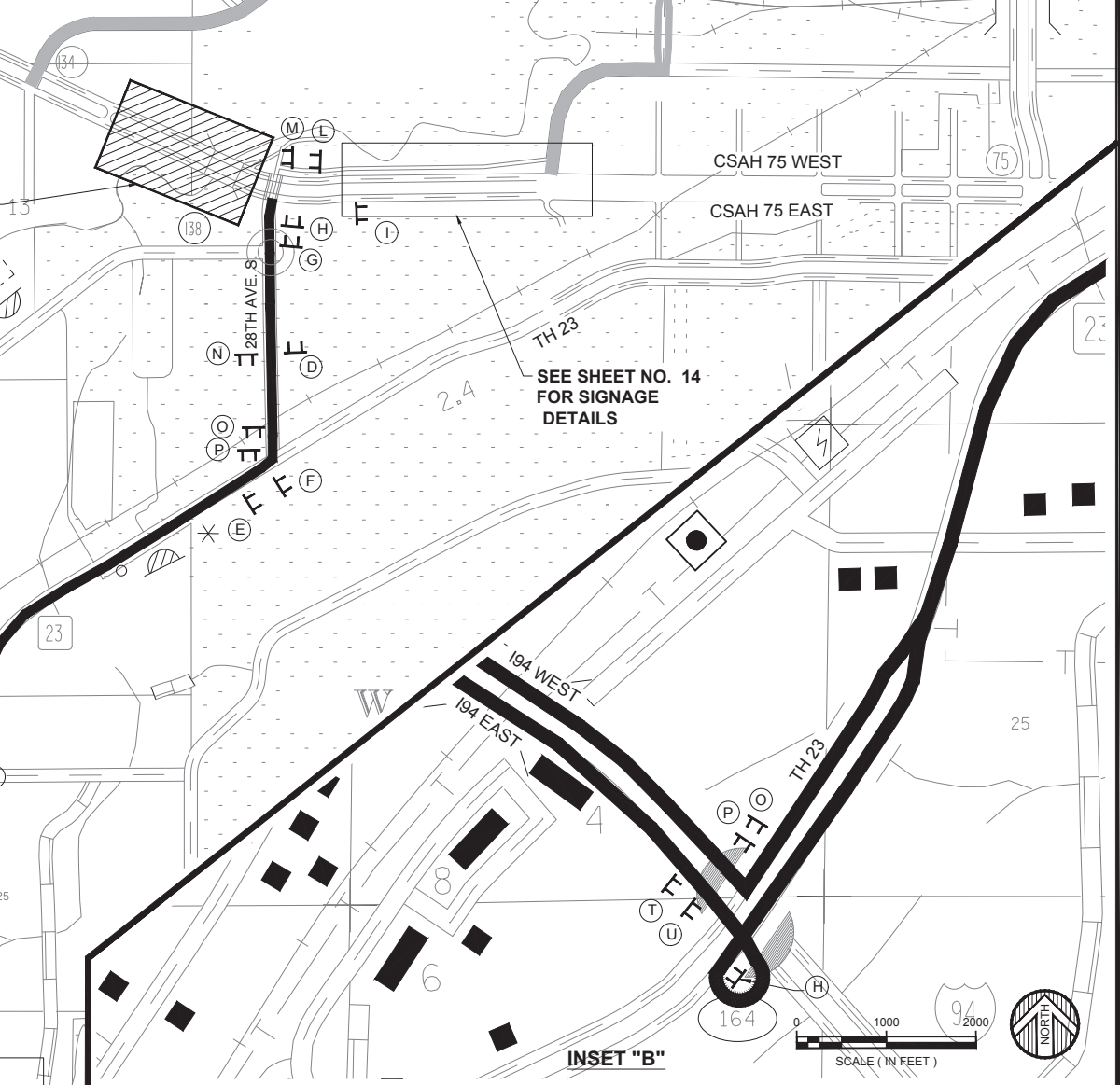
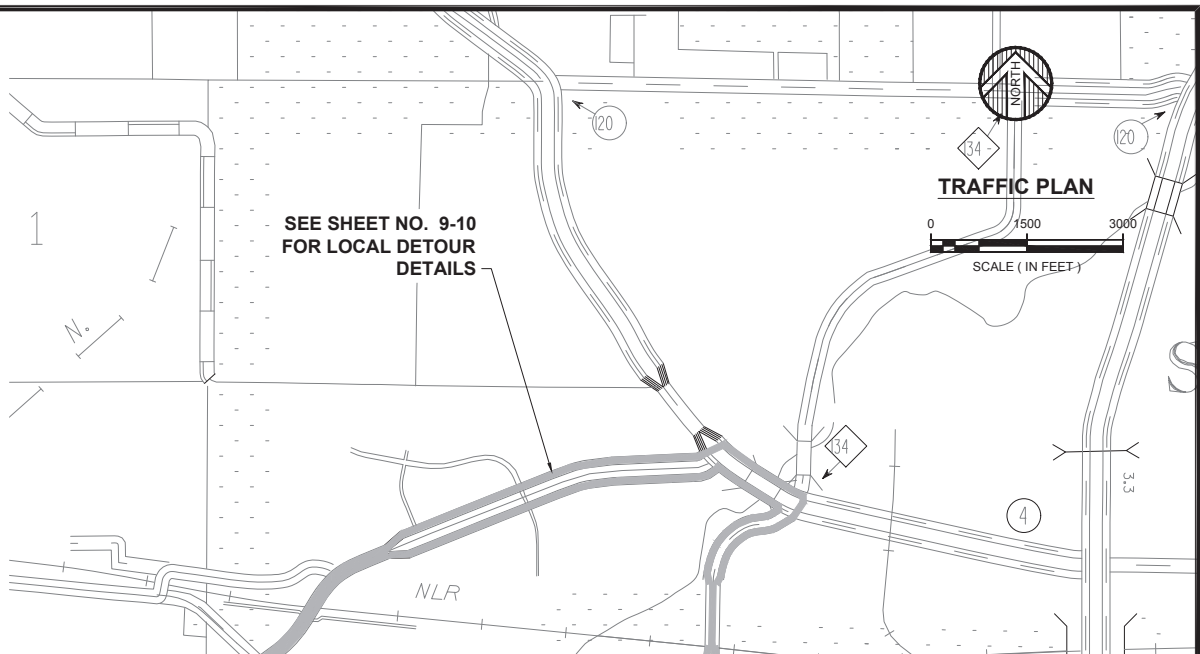


**LEGEND**

- WORK AREA
- TYPE III BARRICADE ASSEMBLY
- SIGN SUPPORTED BY DOUBLE POST
- PORTABLE MESSAGE SIGN (PCMS)
- ARROW BOARD
- DRUM-LIKE CHANNELIZER (TYPE B)

**NOTES:**  
 ALL DETOUR SIGNS ON INTERSTATE 94 WILL COMPLY WITH EXPRESSWAY SIGNING & TEMPORARY SQUARE TUBE GROUND MOUNTED POSTS WILL BE USED SEE DETAIL ON SHEET 16.

DETOUR ROUTE



**WIDSETH**  
 ARCHITECTS • ENGINEERS • SCIENTISTS • SURVEYORS

**I-94 DETOUR PLAN**

APPROVED	DES. BY K.L.P.	DR. BY J.J.E.	BRIDGE NO.
CHK. BY P.J.S.	CHK. BY K.L.P.		73581

CERTIFIED BY: LICENSE NO. 26109 DATE: 05/24/2023 JOB NUMBER: 2021-11062 SP NO. 073-675-042 SHEET NO. 11 OF 41 SHEETS

J:\Stearns County Highway Department-42094\2021-11062\CADD\Civil\APPROACHES\TC-2021-11062-TRAFFIC DETOUR-2.dwg Plotted by: Gary Moorman 5/24/2023 2:29:55 PM © 2023 WIDSETH SMITH NOLTING & ASSOCIATES, INC.